

A.C.T.

Activities in the Community Bring Us Together (A.C.T.)



Written and researched by:

The volunteers of Valley Village

© 2016

Table of Contents

Historical Homes and Local Places	2
Museums	31
Art Museums	74
Wildlife, Parks and Gardens	102
Other Attractions.....	128
Index	131
Acknowledgments	132

Historical Homes and Local Places

Hugo Reid Adobe

(In the LA County Arboretum and Botanical Gardens)

Visit one of the first homes in Los Angeles

301 North Baldwin Ave.
Arcadia, CA 91007
(626) 821-3222
arboretum.org



Don Perfecto Hugo Reid, a Scottish adventurer and naturalized Mexican citizen, was the first private owner of the 13,319 acre Rancho Santa Anita. The adobe was constructed in 1840 with the help of Gabrielino laborers. It was built of sun-dried adobe blocks made by mixing clay soil, water, and a straw binder. The roof was made of rawhide-lashed carrizo cane (*Arundo donax*). As protection from the elements, the roof was smeared with brea (tar) and the walls were white-washed. Today's Hugo Reid Adobe has been reconstructed using original methods and materials whenever possible. The structure is designated California Historical Landmark No. 368.

Visiting Information

- Open daily 9:00 am - 4:30 pm
- Closed on Dec. 25

Admission

- Children 0-5: **FREE**
- Children 5-12: \$3.00
- Adults: \$8.00
- Students and Seniors: \$6.00
- **Admission is FREE on the third Tuesday of each month**, but there is no tram on these days
- Group pricing for 25 or more. Call 626-821-3212 for tour information
- Hours for the library, tram and café are different. Check the website or contact them for further information

Accessibility

- 80-90% of the grounds are wheelchair accessible. Most are paved walkways or roadways, but some trails are covered in brick or are hard packed dirt. Contact the arboretum regarding which historic homes are accessible
- Contact tour guides for information on special tours, as they might be able to accommodate your group
- No part of the facility requires visitors to read to understand or enjoy

- Handicap bathrooms are available for men and women
- Five handicap parking spaces available
- Parking for large buses in tour bus parking lots, loading and unloading near front entrance
- Bathroom near Ayers Conference Hall, (near the entrance) has only two stalls and one is handicap, so it could be used as a family style bathroom if needed
- Only one tram is handicap accessible, and has limited seating

Directions

Take **CA-134 E** toward **BURBANK/GLENDALE**. **CA-134 E** becomes **I-210 E**. Take the **BALDWIN AVE** exit, **EXIT 31**. Turn **RIGHT** onto **N BALDWIN AVE**.

Wayfarers Chapel

Breathtaking architecture and gardens

**5755 Palos Verdes Drive South
Rancho Palos Verdes, CA 90275
(310) 377-1650 Ext. 2.
wayfarerschapel.org/your-visit/**

The Wayfarers Chapel is a spiritual center dedicated to Emanuel Swedenborg. It faces the Pacific Ocean and features a spectacular view, perfect for peaceful enjoyment of nature.



Visiting Information

Open daily from 9:00 am to 5:00 pm

Admission

FREE

Accessibility

- All areas are wheelchair accessible
- Does not provide special programs, but will provide a tour guide if arranged ahead of time of visit
- No part of the facility requires visitors to read to understand or enjoy
- Handicap restrooms available
- One hour to tour the whole facility

Directions

Take the **405 South** to the **110 South** towards **San Pedro**. Exit **Gaffey Street**. Turn **left** on **Gaffey Street** to **25th Street**. Turn **right** on **25th Street**. **25th Street** becomes **Palos Verdes Drive South** (about 7 1/2 miles). The Wayfarers Chapel is on the **right** side of the road.

Parking

- Three handicap parking spaces
- No special instructions for bus parking
- Parking is outdoors
- Does have handicap parking that allows van or small bus with side lift

Additional Information

Call ahead to make sure no special events or ceremonies have been scheduled for that day.

Wrigley Mansion

Tour the home of William Wrigley, of Wrigley's chewing gum fame

**391 S Orange Grove Blvd
Pasadena CA, 91184
(626) 449-4100
pasadenaviews.com/day-35-wrigley-mansion-tournament-house/**

Built between 1906 and 1914, the Wrigley Mansion is now being used as the Tournament of Roses headquarters. On your tour of this lovely mansion you will get to see crowns and tiaras worn by former Rose Queens and Princesses.



Visiting Information

- Tuesday through Saturday from 11:00 am to 9:00 pm
- Sunday from 10:00 am to 2:00 pm
- Closed Monday

**Admission
FREE**

Accessibility

- Wheelchair accessible to first floor, but not to second floor
- There is a viewing of the second floor on the first floor for those who cannot reach
- No part of the facility requires visitors to read to understand or enjoy
- Handicap restrooms are available
- Three parking spaces available for large buses
- It takes about an hour to tour the entire facility

Directions

Merge onto **101 S**. Slight **left** onto **134 E**. Take **Exit 13A** for **Colorado Blvd/Orange Grove Blvd**. Merge onto **W Colorado Blvd**. Turn **right** onto **S Orange Grove Blvd**. Destination will be on **right**.

Parking

Handicap parking is available in front of offices.

Rancho Los Alamitos

Twice listed on the National Register of Historic Places

**6400 Bixby Hill Rd.
Long Beach, CA 90815
(562) 431-3541
ranchoalosalamitos.com**

Today, the Rancho Los Alamitos features 7.5 acres, only a vestige of the original 300,000-acre Los Coyotes land concession given to Manuel Nieto in 1790 for his service on the Gaspar de Portolá expedition to California under the Spanish Crown.



Visiting Information

- Open Wednesday through Sunday from 1:00 pm to 5:00 pm
- Docent-guided tours only every 30 minutes, with the first tour at 1:30 pm and the last at 4:00 pm. Reservations are not required for ranch house tours
- Gardens - Self-guided or docent-guided tours by request
- Barns Area - Self-guided tour or docent-guided tours by request
- Group Tours - **11 or more**, must call to make a reservation

Admission

FREE

Accessibility

- Most areas are wheelchair accessible
- Handicap bathrooms are available
- No part of the facility requires visitors to read to understand or enjoy
- Docent led tours are about one hour. The other parts, like barn, garden, and move at Center will take about one to two hours

Directions

Merge onto **US-101 S**. Take exit **19A** to merge onto **I-405 S/San Diego Fwy**. Take exit **24B** for **Studebaker Rd**. Slight right onto **N Studebaker Rd**. Turn right onto **E Anaheim Rd**. Turn left onto **Palo Verde Ave**. Turn left onto **E Bixby Hill Rd**. Destination will be on the right.

Parking

- Free parking is available at The Rancho on normal operating days
- Two to three handicap parking spots are available
- There are places for buses with side lifts
- On days when special events are scheduled at the Rancho, parking is located at CSULB Lot 11, on Palo Verde Avenue. Enter at the first

entrance, south of Atherton. Continuous shuttle service to the Rancho is provided on special event days (shuttle is handicap accessible).

Additional Information

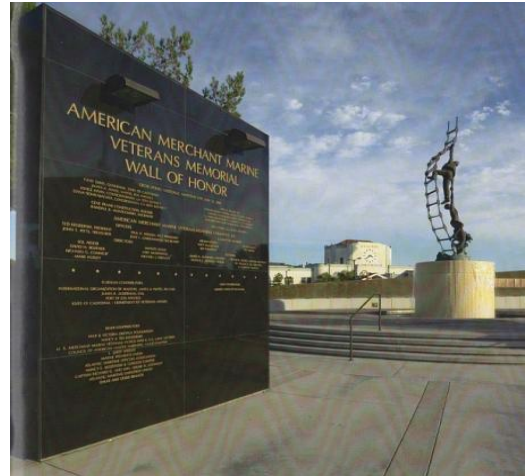
Educational programs and special events throughout the year feature topics as diverse as agricultural and domestic skills, Native American, Japanese and Hispanic culture, the history of landscape design and an annual ranch-style Christmas program.

American Merchant Marine Veterans Memorial

The 1st national memorial to American Merchant Marines

**South Harbor Blvd at West 6th Street
San Pedro, CA 90731
sanpedro.com/sp_point/marinmem.htm**

This striking memorial, the first national memorial to merchant seamen in the United States, was commissioned by a group of local seamen to honor merchant marine veterans from all wars. At the height of World War II, there were 215,000 merchant mariners, including many teenage boys too young to enlist in the military, and men classified as 4-F, who were caught up in the patriotic fervor that swept the country after the Japanese attack on Pearl Harbor.



Visiting Information

Open seven days a week, 24 hours a day

**Admission
FREE**

Accessibility

- All areas are wheelchair accessible
- Accessible bathrooms available at the nearby Los Angeles Maritime Museum

Directions

Take **US 101 Freeway South**, exit **19A** for **I-405 S/San Diego Fwy**, take **exit 19A** for **I-405 S/San Diego Freeway**, take exit **37A** to merge onto **I-110 S** toward **San Pedro**, Take exit **1A** to merge onto **CA-47 N** toward **Vincent Thomas Bridge/Terminal Island/Long Beach**, take exit **1A** to merge onto **CA-47 N** toward **Vincent Thomas Bridge/Terminal Island/Long Beach**, turn **right** onto **N Harbor Blvd**. American Merchant Marine Veterans Memorial should be up ahead.

Parking

- Free parking is available in the lot across the street from Acapulco Restaurant, south of the Los Angeles Maritime Museum
- Parking for disabled visitors is available at the Red Car Station at 6th Street and Harbor Boulevard
- From Harbor Boulevard, turn east on 6th Street, cross the railroad tracks, and make a quick left into the disabled parking area

City Hall Observation Deck

See all of Downtown L.A. from one spot

**200 N Spring St,
Los Angeles, CA 90012
(213) 485-2121
lacityhall.org**

Catch the very best view of the Los Angeles skyline—and absorb some history along the way—from the City Hall Observation Deck. Ride up two elevators, past 32 floors and endless halls of architectural eye candy.



Visiting Information

- Observatory open Monday through Friday from 8:00 am to 5:00 pm
- Tours are available at 10:00 am and 12:00 pm Monday through Thursday, and self-guided tours are available at other times

Admission

FREE Docent led tours

Accessibility

- City Hall is handicap accessible
- Handicap restrooms are available
- To reach the observatory on the 27th floor requires taking 3 elevators; the first one to the 22nd floor, the 2nd to the 26th floor and then a short stop up one floor
- Everyone is required to go through security, including metal detectors, and to get a name tag which must be worn at all times

Directions

From the **US-101 S**, take exit **3A** for **Broadway**. Merge onto **W Aliso St**. Turn **right** onto **N Spring St**.

Parking

No parking is allowed in front of the building but there are several private lots in the vicinity.

Casa Adobe De San Rafael & Park

Step back in time to a mid-1800s casa

1330 Dorothy Drive
Glendale, CA 91202
(818) 502-9080
(818) 548-2184
ci.glendale.ca.us/parks/casa_adobe.asp



The highlight of this 1.6 acre park is the Casa Adobe de San Rafael. The casa was built about 1865 by Tomas Sanchez and has New England style architecture. In 1875 the property was sold, abandoned, and fell into a ruinous state. In 1930 the Casa was purchased by a wine company who planned to tear it down, along with the large eucalyptus trees on the property. Local community members campaigned to preserve the house as a historic landmark. The City of Glendale purchased the adobe in 1930, and by 1932 La Casa de Adobe de San Rafael was completely refurbished. The adobe includes a Monterey-style covered porch, beautiful sunken garden, brick patio, gray shake roof, and long narrow front windows. Interior furnishings are from the 19th century. The park also includes a picnic pavilion, a turf area, gas grill, sink, electrical outlets, and public restroom facilities.

Visiting Information

Open daily from 8:00 am to dusk

Admission
FREE

Accessibility

- Most areas of the Park are wheelchair accessible
- There are handicap restrooms for both men and women
- There is a place for the driver to load and unload clients using a side lift
- Tours are available, please check below for details
- Because of the historic nature of the facility, barbecues and/or amplified sound are not permitted
- For upcoming events please visit the website and the "Community Services and Parks Home Page"
- This park has 1.6 acres, including a picnic pavilion which is available for small company or family gatherings, a turf area that is available for larger festival-type events, gas grill, sink, and electrical outlets for the public use. Call to reserve the facilities
- For more information, visit their website

Directions

Take the **US 101 S** to **CA 134 E**. Exit at **Pacific Ave**. Turn **left** at **N Pacific Ave**. Turn **right** at **W Stocker St**. Take the **first left** which is **Dorothy Dr**. **Destination** is on the **right**.

Parking

- Parking is in a small open air lot and is free
- Oversized vehicles may have difficulty navigating the turn into the lot
- Diagonal parking spaces and limited space may cause oversized vehicles to impede traffic flow
- There is street parking for the oversized vehicles with a 6-8 foot wide curb to load and unload clients

Additional Information

- Tours are led by Docents
- September - June: First Sunday of the Month from 1:00 pm to 3:00 pm
- July and August: Every Sunday from 1:00 pm to 3:00 pm
- Fiesta de las Luminarias (Festival of Lights) and Christmas Open House are held during the month of December. For more information please call (818) 502-9080

Catalina Verdugo Adobe

One of the Oldest Buildings in Glendale

**2211 Bonita Drive
Glendale, CA 91208
(818) 548-2184
ci.glendale.ca.us/parks/verdugo_adobe.asp**

The park is 1.3 acres in size and is nestled at the base of the Verdugo Hills in a residential neighborhood. It is home to one of the oldest buildings in the City of Glendale and the remnants of the historic "Oak of Peace". Amenities include a picnic area available for family picnics or gatherings.



Visiting Information

- Open daily from 7:00 am to dusk
- Barbecues and amplified sound are NOT permitted
- Can call for reservations and program information

Admission FREE

Accessibility

- Most areas of the Park are wheelchair accessible
- There are no special programs for the disabled
- There are handicap restrooms for both men and women
- There is a place for the driver to load and unload clients using a side lift

Directions

Take the **US 101 S** to **CA 134 E**. Exit at **Pacific Ave.** and make a Left. at **Stocker St.** make a right and the 1st left turn onto **Dorothy Dr.**. Your destination will be on your right.

Parking

Parking is free and in an open lot.

Richard J. Riordan Central Library

The third largest public library in the United States in terms of book and periodical holdings

**630 West 5th Street
Los Angeles, CA 90071
(213) 228-7000
asklapl@hotmail.com
lapl.org**



The nation's third largest public library, the Richard J. Riordan Central Library is centered on the handsome original building, designed in 1926 by Bertram Goodhue. Restored to their pristine condition, a pyramid tower and a torch symbolizing the "light of learning" crown the building. The Cook Rotunda on the second floor features murals by Dean Cornwell depicting the history of California, and the Tom Bradley Wing, named for another mayor, has a soaring eight-story atrium.

Visiting Information

- Monday through Thursday from 10:00 am to 8:00 pm
- Friday and Saturday from 9:30 am to 5:30 pm
- Sunday from 1:00 pm to 5:00 pm

Accessibility

- Handicap parking is available
- The Central Library is fully accessible to the disabled throughout the building

Directions

Take the **Ventura/101 Freeway, East** to the **Hollywood /101 Freeway** then **South** to the **Temple Street Exit**. Go straight off the exit **south down Hope Street**. Hope merges into **Flower Street**. Proceed to the **524 S. Flower Street Garage**.

Parking

- Flower and Fifth Street Entrance have ramps
- On the south side of Fifth Street, close to the Fifth Street entrance, to the building, there are two parking spaces (with no meters or charges) for vehicles with disabled placards
- The commercial parking lot at 524 S. Flower Street has the disabled parking symbol unit's sign. The spaces are available immediately to the right as you enter the garage

Validated parking for people using the Central Library available in the 524 S. Flower Street garage beneath the Maguire building. To obtain a validation, you must show your

Los Angeles Public Library card at the Information Desk on the first floor during regular Library hours.

Additional Information

Library cards are available free of charge.

Chinatown

The backyard of Downtown Los Angeles

Chinatown Business Improvement District
727 N. Broadway Suite 208
Los Angeles, CA 90012
(213) 680-0243
chinatownla.com

Chinatown is a neighborhood in Downtown Los Angeles, California that became a commercial center for Chinese and other Asian businesses in Central Los Angeles in 1938. The area includes restaurants, shops and art galleries but also has a residential neighborhood with a low-income, aging population of about 10,000 residents. The original Chinatown developed in the late 19th century, but it was demolished to make room for Union Station, the city's major ground-transportation center. A separate commercial center, known as "New Chinatown," opened for business in 1938. There are two schools and a branch library in Chinatown, as well as a city park, a state park and a medical center and hospital. Many motion pictures have been filmed in the area.



Visiting Information

Monday through Sunday all day

Admission

FREE

Accessibility

- All areas are wheelchair accessible
- Walking tours
- No part of Chinatown requires visitors to read to understand or enjoy
- Handicap restrooms should be available, but may require some searching to locate
- There are a variety of open air lots and enclosed garage structures can be found in Chinatown with prices that generally range from \$3-\$8 for the day

Directions

Chinatown is located just **north west of downtown Los Angeles** - take the **Hill Street exit** off of the **110 Freeway** - across from **Elysian Park**. Chinatown is in the "backyard" of **downtown Los Angeles** and is easily within driving distance. Just take **Hill Street** and you will end up in downtown.

Parking

- Bamboo Plaza
988 North Hill Street
(Entrance on Bernard)

- Mandarin Plaza
970 N. Broadway
- Modern Parking Incorporated
977 N Broadway Central Parking System
988 N Hill St
- Parking costs between \$3-\$8 for the day.

Additional Information

Expect to travel four blocks from your starting point. For special tour arrangements or requests, please contact the BID office at (213) 680-0243 or via email at info@chinatownla.com with your need.

El Pueblo De Los Angeles

Follow the footsteps of the first Los Angeles settlers

**125 Paseo De La Plaza # 400
Los Angeles, CA
(213) 485-6855
elpueblo.lacity.org**

El Pueblo de Los Angeles Historical Monument is near the site of the early Los Angeles town, where 44 settlers of Native American, African, and European heritage established a farming community in September 1781. Since that time, Los Angeles has been under the flags of Spain, Mexico and the United States, and has grown into one of the world's largest metropolitan areas. El Pueblo is a living museum that continues to fulfill its unique role as the historic and symbolic heart of the city, reflecting the Native American, African American, Spanish, Anglo, Mexican, Chinese, Italian, and French cultures that contributed to its early history. Of the monument's 27 historic buildings, eleven are open to the public as businesses or have been restored as museums.



Visiting Information

Guided tours from Tuesday through Saturday at 10:00 am, 11:00 am and 12:00 pm

Admission

FREE

Accessibility

- Parking - One handicap parking space is provided in Lot 1 and five spaces are provided on Lot 2. One additional space is available in Lot 3
- El Pueblo Historical Monument ensures compliance with the Americans with Disabilities Act (ADA) at all facilities, services, and events to provide equal access to all visitors
- Biscailuz Building - Wheelchair access is provided at the north end of the building, accessed from the Placita de Deolores (Alameda St) side of the building, providing access to the elevator serving all floors of the building. The Biscailuz Building holds the Mexican Cultural Institute Gift Shop and Library (1st Floor), El Pueblo Administrative Offices (2nd – 4th Floors), Mexican Cultural Institute offices (5th Floor), Meeting Room and MCI Art Gallery (Basement)
- Avila Adobe Museum - Access to the adobe is provided on Olvera Street at the main entrance to the museum
- Visitors Center - Access to the Visitors Center is provided at two locations: Enter at 424 N. Main Street at the entrance to the Sepulveda House, OR Enter at Space W-

15 on Olvera Street - take the lift at W-15 to the kitchen exhibit and Visitors Center in the Sepulveda House

- Chinese American Museum - Access to all Chinese American Museum exhibits is provided on Sanchez Street through the main entrance of the museum. Take the elevator inside the museum to view exhibits on the mezzanine and second floor
- After your walking tour of El Pueblo, you can also visit Olvera Street, Ávila Adobe, Water Exhibit, Christine Sterling Exhibit, La Placita, Chinese American Museum, and much more

Directions

Take the **US 101 S** to **downtown Los Angeles**. Exit **Alameda** and follow signs. Once you **turn on Alameda** parking lots will be to your **left**.

Parking

- Lot 1 is located at 419 N. Main
Mon – Fri 7:00 am to 5:30 pm \$2.00 for 20 min \$13.20 MAX
Sat, Sun & holidays 9:00 am to 5:30 pm \$9.00 Flat Rate
- Lot 2 is located at 615 N. Main
Mon – Fri 6:00 am to 9:00 pm \$2.00 for 20 min \$13.20 MAX
Sat, Sun & holidays 6:00 am to 9:00 pm \$9.00 Flat Rate
Mon – Fri only After 4:00 pm \$8.00
- Lot 3 is located at 853 N. Alameda
Mon – Sun 9:00 am to 9:00 pm \$2.00/20min \$13.20 MAX
- Lot 4 is located at 426 N. Los Angeles
Mon – Fri 6:00 am to 4:30 pm \$8.00 Flat Rate
Sat and Sun 9:00am to 5:00pm \$8.00 Flat Rate
- Lot 5 is located at 711 Alameda
Mon – Fri 6:00am-2:00pm \$8.00 Flat Rate
Sat and Sun CLOSED

Additional Information

Tours start at the Las Angelitas del Pueblo office, located next to the Old Plaza Firehouse on the SE end of the Plaza. For tour reservations and information, call (213) 628-1274 or complete the online Tour Request Form. Tours are given on Monday per request and docent availability. Tours are 50 min long and are a walking tour. The **FREE** historic walking tours cover the 4th and 5th grade LAUSD curriculum requirements regarding early California history and the missions.

Farmers' Market

Enjoy food stalls, sit-down eateries, prepared food vendors, and produce markets

**6333 West 3rd Street
Los Angeles, CA 90036
(323) 933-9211
farmersmarketla.com**



The Farmers' Market features more than 100 restaurants, grocers, and tourist shops, and is located just south of CBS Television City. Unlike most farmers' markets, which are held only at intervals, the Farmers' Market of Los Angeles is a permanent installation and is open seven days a week. The dozens of vendors serve many kinds of food, both American cuisine from local farmers and restaurants and Los Angeles' variety of local ethnic foods from the many immigrant communities of Los Angeles, with many Latin American and Asian cuisines well represented.

Visiting Information

- Open Monday through Friday from 9:00 am to 9:00 pm
- Saturday from 9:00 am to 8:00 pm
- Sunday from 10:00 am to 7:00 pm

**Admission
FREE**

Accessibility

- All of the Market's shops and patios are wheelchair accessible
- Handicap restrooms are available
- Special accommodations for tour groups are available on occasion. Call for more details
- Visit the Farmers' Market office (directly upstairs at Gate 1) and ask the staff for assistance

Directions

From the **US-101 S**, take **exit 14** for **Laurel Canyon Blvd.** Continue onto **N Crescent Heights Blvd.** Turn **left** onto **Santa Monica Blvd E.** Turn **right** onto **N Fairfax Ave.** Turn **left** onto **W 3rd St.**

Parking

- Parking is available in either of the Market's two convenient lots
- Farmers' Market Parking Rates with Validation: two hours free validation with purchase from a Market merchant, \$3 for the third hour, \$1 for each additional 20 minutes, \$15 maximum

- Additional parking is also available in The Grove Parking Structure, next door
- One hour parking in the structure is free
- Two hour validations available from select Grove merchants. Large bus parking and to space unload passengers are on the side streets of the North market, on Fairfax Ave and Farmers' Market Place, and Third Street

Additional Information

Every year, the Farmers' Market offers a number of special events which are **free** and open to the public. Visit www.farmersmarketla.com/events for details.

Greystone Mansion

Discover one of Beverly Hills' hidden gems

**905 Loma Vista Dr.
Beverly Hills, CA 90210
(310) 285-6830
Rangers: (310) 285-6835
beverlyhills.org/exploring/greystonemansiongardens**



Greystone Mansion, also known as the Doheny Mansion, is a Tudor Revival mansion on a landscaped estate with distinctive formal English gardens, located in Beverly Hills, California, United States.

Architect Gordon Kaufmann designed the residence and ancillary structures, with construction completed in 1928. The estate was a gift from oil tycoon Edward L. Doheny to his son, Edward "Ned" Doheny, Jr., and his family. Following the purchase of the estate by the city of Beverly Hills in 1965, the property became a city park in 1971 and was subsequently added to the National Register of Historic Places in 1976. The house and grounds are often used in filmmaking and television production. The house's descending staircase is one of the most famous sets in Hollywood.

Visiting Information

- Open daily from 10:00 am to 5:00 pm
- Daylight Savings Time from 10:00 am to 6:00 pm
- Closed Thanksgiving, Christmas, and occasionally for filming and special events

Admission

FREE

All exterior areas are open to the public but interiors are closed to the public and only shown during regularly scheduled tours which are held the first Saturday of the months December through April.

Accessibility

- Not all areas are wheelchair accessible. Many areas of the mansion have stairs or other features that make it inaccessible to wheelchairs
- There are handicap restrooms for both men and women
- There are no special programs for the disabled
- No part of the facility requires visitors to read to understand or enjoy
- Parking is free and there is space for large buses
- There is a great view of Los Angeles from the mansion grounds
- The Beverly Hills historical display inside the mansion highlights the history of Greystone Mansion
- For more questions please call the number listed above or visit the website

Directions

Take the **101 S** to the **405 S**. Take exit **55B, Wilshire Blvd. E**. Take **Wilshire Blvd. E 2.7 miles** to **Santa Monica Blvd**. Make a slight **left** to merge onto **Santa Monica Blvd**. Go one mile and turn **left** onto **N Hillcrest Rd**. Go one mile and turn **left** onto **Doheny Rd**. Go 0.2 miles and turn **right** at **Loma Vista Dr**. Your destination will be on the **left**.

Parking

Parking is **free** and you will be directed by the rangers as you enter the lot.

Additional Information

Special tours are given by the rangers for groups of 10 or more for \$15/person or a minimum of \$150.

Hathaway Ranch

**Preserving the early farming, ranching, and oil culture and history of
Fulton Wells and Santa Fe Springs**

**11901 Florence Ave
Santa Fe Springs, CA 90670
(562) 777-3444
hathawayranch@gmail.com
hathawayranchmuseum.org**



The Hathaway Ranch Museum is a non-profit corporation dedicated to preserving and presenting the eras of farming, ranching, and oil development in early Fulton Wells/Santa Fe Springs. The landmark focal point is the large two-story 1933 Spanish-Mediterranean style ranch house, along with a flat-belt line-shaft driven machine shop, myriad historic farm and ranching structures, oil drilling equipment, and much more.

Visiting Information

- Open Monday, Tuesday, and Thursday from 11:00 am to 4:00 pm
- Fridays by appointment only
- Closed all major holidays

Admission

FREE

A suggested donation of \$4.00 per person is appreciated

Accessibility

- Facility is handicap accessible
- Handicap restrooms are available
- Group and off hours tours can be scheduled by special arrangement. Contact Francine (Hathaway) Rippey, Executive Director, at (562) 696-8671 or email the HRM at hathawayranch@gmail.com
- Visit the website to learn about special events happening at the ranch

Directions

The Hathaway Ranch Museum is located about 15-miles east of downtown Los Angeles in Santa Fe Springs. Adjacent to the **Northeast** corner of the Museum is Heritage Park. From **I-5 S**, take exit **124** for **I-605 S**. Take exit **123** for **Florence Ave**. Turn **left** at **Florence Ave**. Destination will be on the right.

Parking

- Onsite parking is **free**
- Access is through a somewhat narrow gateway which could pose a problem for buses

- Vans and small buses should be OK
- Check with site regarding the requirements of your vehicle
- On street parking is available but not recommended

Workman and Temple Family Homestead Museum

A historic house museum that features the home and private cemetery belonging to the Workman-Temple family

**15415 East Don Julian Rd.
City of Industry, CA 91745
(626) 968-8492
Fax: (626) 968-2048
info@homesteadmuseum.org
homesteadmuseum.org**



Visit this six-acre historical park nestled in the City of Industry. Here you can tour several homes and buildings from different eras. The Homestead Museum provides a unique way to look at Southern California's history from the 1840s, when this land was still part of Mexico, through the 1920s, when Los Angeles came to be known as a major metropolitan city.

Visiting Information

- Open Monday to Friday from 9:00 am to 5:00 pm
- Saturday and Sunday from 12:00 pm to 5:00 pm
- Closed on major holidays

Admission

FREE

Donations are greatly appreciated

Accessibility

- The museum strives to accommodate all visitors, including those with physical and cognitive impairments. Most areas are accessible to those in wheelchairs
- The Museum does not have special programs geared towards disabled visitors
- Tours emphasizing specialized topics or conducted in American Sign Language and select foreign languages are available by appointment. Museum literature is available in English, Spanish, and Chinese
- No part of the facility requires visitors to read to understand or enjoy
- Handicap restrooms are available for both men and women
- The Homestead Museum offers a variety of Special Programs for all ages. Programs are listed chronologically on their web site
- The Homestead Museum Store is open during museum hours
- Please note there are no food services at the facility. Drinking fountains and cold beverage machines are onsite
- Visitors are welcome to bring a picnic to enjoy in the museum's picnic area or by the picturesque pond. Groups of 10 or more can reserve the picnic area free of

charge by calling (626) 968-8492 during office hours. The picnic area contains 8 tables that can accommodate up to 60 adults or 74 children

Directions

Take the **CA 60 E** and **exit S. Hacienda Blvd.** Head **north 0.6 miles**. Turn **left** onto **Don Julian road**. Go 1,000 feet. Museum will be on your **right**.

Parking

- There are a number of open air parking lots adjacent to the park
- Plenty of parking is available for large buses or oversized vehicles

Additional Information

Guided Tours are available Wednesday through Sunday at 1:00, 2:00, 3:00, and 4:00 pm. Please check the calendar of events for more details. Scheduled Tours are available daily with advanced reservations for groups of 10 or more. Spanish-Language Tours are offered the second Sunday of every month at 1:30, 2:30, and 3:30 pm.

Orcutt Ranch Horticultural Center (formerly known as Rancho Sombra Del Roble)

A historic residence featuring the architectural styles, crafts, and symbols of the American Southwest

**23600 Roscoe Blvd
West Hills CA 91304
(818) 346-7449
[laparks.org/dos/horticulture/orcuttranch.h
tm](http://laparks.org/dos/horticulture/orcuttranch.htm)**



The Orcutt Ranch was the vacation and retirement estate of William Warren Orcutt and his wife Mary Logan Orcutt. The adobe residence, as well as the estate's garden, ranch structures, oak trees, and citrus orchard have historic significance because of the distinction of its owner, W.W. Orcutt, pioneer of the oil production industry in California and discoverer of the prehistoric fossils at the La Brea Tar Pits.

Visiting Information

Open daily from 7:00 am to 10:00 pm

Admission

FREE

Accessibility

Not all areas are accessible by wheelchairs.

Directions

Head **west** on **Sherman Way** towards **Topanga Canyon Blvd**. Turn **right** go **north** on **Topanga Canyon Blvd**. Turn **right** onto **Roscoe Blvd**. Heading **west** on **Roscoe**. Continue on **Roscoe Blvd**. Go past **Woodlake ave.**, Orcutt ranch will be on the **right** hand side just **before valley circle**. Note: If you have gone to the intersection of Valley Circle and Roscoe Boulevards then you have gone too far.

Public transportation

No public transportation at this time. It is best to call a cab if you are unable to drive a car.

Parking

- Outside parking available
- Limited area for bus parking

Pershing Square

An outdoor concert, event center and public park located in the heart of downtown Los Angeles

**South Hill Street and
West Sixth Street
Los Angeles, CA 90015
(213) 847 -4970
<http://laparks.org/pershingsquare/>**

Pershing Square features an open and elevated amphitheater, a grove of orange trees that pays tribute to Los Angeles' agricultural roots, and at the south end a large river rock-lined circular fountain with a time-released water flow creating a tidal action. Artists Ricardo Legorreta, Laurie Olin and Barbara McCarren helped design Pershing Square.



Visiting Information

- For more history and walking tours, contact the LA Conservatory at (213) 623-2489
- Pershing Square Office hours: Monday to Friday from 9:00 am to 5:30 pm
- Staff is on-site for weekend special events
- Pershing Square has 24-hour security

**Admission
FREE**

Accessibility

- The park is handicap accessible
- No part of the facility requires visitors to read to understand or enjoy
- One handicap bathroom is available in the parking garage

Directions

Merge onto **US-101 S**. Keep **right** to stay on **US-101 S**, follow signs for **Hollywood Fwy/Los Angeles**. Take **exit 3B** for **I-110 S/Harbor Fwy** toward **San Pedro**. Merge onto **CA-110 S/Harbor Fwy**. Take the **Interstate 110 S** exit toward **6th St/Wilshire Blvd/4th St/3rd St**. Keep **left** at the fork, follow signs for **CA-110 S/Harbor Fwy**. Take **exit 23B** to merge onto **W 4th St** toward **Downtown**. Turn **right** onto **S Hill St**.

Parking

- Handicap parking is available on the first level of parking garage
- An elevator is also located in the center of the garage
- Parking height dimensions for parking garage is 6' x 6', buses will not fit

- A nearby parking garage is \$10 per day before 11:00 am
- After 11:00 am it is \$16 to park for the day

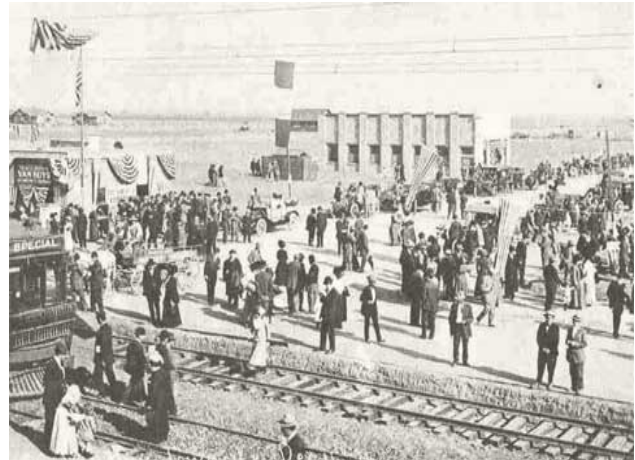
Museums

Los Angeles Valley College Historical Museum

Learn about the history of the San Fernando Valley

**5800 Fulton Ave
Van Nuys, CA 91401
(818) 947-2373
lavc.edu/museum**

Founded in 1975 by Dr. James Dodson, the mission of the Museum is to collect, preserve, and promote historical artifacts related to the history of the San Fernando Valley. It also serves as a repository for Los Angeles Valley College historical collections.



Visiting Information

Open by appointment only for the 2015-16 school year. Contact the museum for up-to-date opening hours.

Admission FREE

Accessibility

- All areas of the museum are wheelchair accessible
- There are no special programs for the disabled
- Some parts of the museum may require visitors to read to understand or enjoy
- Handicap restrooms are available for both men and women
- Parking for large buses is available. Please make arrangements for the parking as spaces are limited
- It may take up to two hours to tour the entire museum

Directions

The Museum is located in **Bungalow 16** of the LAVC campus **adjacent to Burbank Blvd.** Parking is available with a **Museum Pass** on **Lot H**. From **Interstate 101**, take the **Coldwater Canyon exit**. Head **north** to **Burbank Blvd.** Turn **left** on **Burbank**. Go **¼ mile** to **Fulton Blvd.** Turn **Right** on **Fulton**. The LAVC is on your **right**.

Parking

- Parking is available with a Museum Pass on Lot H
- This is an open air parking lot and parking for large buses is available
- Please make arrangements for the parking as spaces are limited
- There is also metered street parking for 25 cents for 30 minutes

Additional Information

- Open regularly during the college semester

- Hours may vary so calling ahead is advised
- Private tours can also be arranged
- Schedule museum tours by appointment including on Saturday and Sundays by contacting Bill Carpenter, Musuem Curator (818) 947-2373, carpenter@lavc.edu

Travel Town Museum

Imagine yourself as a train engineer in Travel Town

**5200 Zoo Drive
Los Angeles, CA 90027
(323) 662-5874
laparks.org
travel.town@lacity.org**

The Travel Town Transportation Museum is an outdoor museum which preserves and celebrates the railroad heritage of the western United States, its history and its artifacts. The Museum focuses on displays of railroad artifacts and memorabilia. Climb aboard a steam engine locomotive, view artifacts relating to railroad history, or take a ride on a miniature train.



Visiting Information

- Open Monday through Friday from 10:00 am to 4:00 pm
- Saturday and Sunday 10:00 am to 5:00pm
- Closed Christmas Day

Admission FREE

Accessibility

- All general areas of Travel Town are wheelchair accessible. However, those railroad cars that allow visitors to climb inside have not been modified to accept wheelchairs. The Miniature Train rides are also not wheelchair accessible
- There are no special programs for the disabled
- No part of the facility requires visitors to read to understand or enjoy
- Handicap restrooms are available
- Parking for large buses is available on a limited basis
- Groups must make reservations with the Operations Manager by calling (323) 662-5874, or in person at the office near the Travel Town entrance. Office hours are 10:00 am to 2:00 pm daily. The Travel Town Museum Foundation offers pre-visit instructional materials

Directions

Take **CA-134** freeway **East** toward **BURBANK/GLENDALE**. Merge onto **FOREST LAWN DR** via **EXIT 4**. Turn **LEFT** onto **ZOO DR**. Follow the signs to parking and drop off areas.

Parking

- Once you exit the 134 Freeway and turn on Zoo Drive, follow the signs that lead to the parking and drop off area
- Limited parking is available for larger vehicles
- Parking area is in an open air parking lot

Additional Information

It is suggested that visitors look up ride schedules and fairs before planning a trip.

Wells Fargo History Museum

Learn about the historic rise of the famous Wells Fargo Bank

333 S. Grand Avenue
Los Angeles, CA 90071
(213) 253-7166
wellsfargohistory.com/museums/

Located in the Wells Fargo Center in downtown Los Angeles, this museum highlights the Company's role in Southern California. Exhibits include an original Concord Coach, gold (including the 27-ounce Challenge Nugget), a panoramic painting of Los Angeles in 1859, and a walk-in, historically-recreated agent's office.



Visiting Information

- Open Monday through Friday from 9:00 am to 5:00 pm
- Closed Saturday, Sunday, and all major holidays

Admission
FREE

Accessibility

- All areas are wheelchair accessible
- There are no special programs for disabled groups
- No part of the facility requires visitors to read to understand or enjoy
- Handicap restrooms are available for both men and women
- **There is no parking for large buses**
- **FREE** tours are offered for schools and possibly for disabled adults, depending on docent availability and group size. Call ahead to schedule
- Free audio guide available upon request
- Loading and unloading can be done in front of museum

Directions

From **US-101 S** take the **TEMPLE ST** exit. Turn onto **W TEMPLE ST**. Turn **RIGHT** onto **GRAND AVE**. Continue 1/2 mile, location will be on the **right**.

Parking

- Parking is below the museum off Hope St at a rate of \$40.00 a day
- There is lot next door to the bank that is \$12.00 a day that you can access from Hope St
- Lot may not be able to accommodate oversized vans or buses.

Monrovia Historical Museum

Nestled in the picturesque foothills of the San Gabriel Mountains

**742 East Lemon Avenue
Monrovia, CA 91016
(626) 357-9537
monroviahistoricalmuseum.org**



This museum illustrates our city's 120-year history through recreated rooms from the early 1900s, exhibits honoring our schools, the famous Pottenger Health Sanatorium, Native American and Natural History artifacts, and much more. The Monrovia Historical Museum is surrounded by Recreation Park with lush gardens and family-oriented sports fields.

Visiting Information

- Open Thursdays and Sundays from 1:00 pm to 4:00 pm
- Appointments can be made by calling (909) 297-6356

**Admission:
FREE**

Accessibility

- All areas are wheelchair accessible
- Handicap bathrooms are available
- Some parts of the facility may require visitors to read to understand or enjoy them
- Facility requires roughly 45 minutes to tour

Directions

Merge onto **US-101 S**. Keep **left** to continue on **CA-134 E**, follow signs for **Burbank/ Glendale**. Merge onto **I-210 E**. Take exit **35A** toward **Mountain Ave**. Merge onto **E Evergreen Ave**. Turn **left** onto **S Mountain Ave**. Turn **left** onto **E Lemon Ave**. Destination will be on the **left**.

Parking

- Parking is outside and street parking available
- There are two handicap parking spaces

San Gabriel Mission Church

A fully functioning Roman Catholic mission and historic landmark

**428 S Mission Drive
San Gabriel, CA 91776.
(626) 457-3035
sangabrielmissionchurch.org**



The adobe museum building was built in 1812 and was originally used for sleeping quarters and book storage. Exhibits include mission relics, books and religious artifacts. The grounds feature operations from the original mission complex, including indoor and outdoor kitchens, winery, water cisterns, soap and candle vats, tanning vats for preparing cattle hides, and a cemetery.

Visiting Information

- Museum and gardens open Monday through Saturday from 9:00 am to 4:30 pm
- Sunday from 10:00 am to 4:00 pm
- Open 359 days a year for self-guided tours
- Closed on New Year's Day, Easter Sunday, July 4, Thanksgiving Day and Christmas Day, and open 9:00 am to 12:00 pm on Dec. 24. The old Mission Church is not available on Saturdays during baptisms, weddings, funerals, or during Sunday morning mass from 9:30 am to about 10:40 am.

Admission

- Age 0 to 5 and persons with disabilities are **FREE**
- Age 6-17 is \$3
- Age 18-61 is \$5
- Age 62 and older is \$4
- Admission fee includes a self-guided tour brochure (in English or Spanish) with a map and historical information. It's best to start a self-guided tour no later than 3:00 pm
- Length of tour depends on the group, but plan for about one hour

Accessibility

- Wheelchair accessible in certain areas; refer to the brochure.
- No part of the facility requires visitors to read to understand or enjoy.
- Handicap bathrooms are available.

Directions

Merge onto **US-101 S**. Slight right to stay on **US-101 S** (signs for Hollywood Fwy/Los Angeles). Merge onto **CA-170 S**. Continue onto **US-101 S**. Continue onto **CA-2 E**. Continue onto **US-101 S**. Slight left onto San Bernardino Fwy (signs for **San**

Bernardino/Interstate 10 E). Merge onto **I-10 E**. Make a U-turn. Take exit **23B** to merge onto **S Garfield Ave**. Turn right onto **E Mission Rd**. Continue onto **S Junipero Serra Dr**. Destination will be on the left.

Parking

- Handicap parking is available.
- Parking is available for large buses with room for side lifts on buses.

Additional Information

Museum Saturday usually takes place on the first Saturday of the month. San Gabriel Historical Museum/Hayes House in San Gabriel within two blocks of the mission is usually open the first Saturday of the month from 11:00 am to 4:00 pm.

California Science Center

Hands-on learning for everyone

700 Exposition Park Blvd.
Los Angeles, CA 90037
(323) 724-3623
4info@cscmail.org
californiasciencecenter.org



The California Science Center is the West Coast's largest hands-on science center. The facility spans more than 400,000 feet and includes four major exhibit areas. The space shuttle Endeavor is also located here and guests can see the Endeavor up close. The Science Center hosts international touring exhibits and has an IMAX theatre with a seven story screen.

Visiting Information

- Open daily from 10:00 am to 5:00 pm
- Closed for Thanksgiving, Christmas, and New Year's Day

Admission

Admission to the Science Center's permanent galleries is **FREE**

Accessibility

The California Science Center is accessible to visitors with disabilities. Elevators and ramps serve all public areas, including the IMAX® Theater, and wheel chairs are available

Directions

Ventura Fwy (US-101 S) toward US-101 E/Ventura Fwy East/Los Angeles. Take the I-405/San Diego Fwy/Sacramento/Santa Monica exit onto San Diego Fwy (I-405 S) toward San Diego Fwy South/Santa Monica. Take the I-10/Los Angeles/Santa Monica exit onto Rosa Parks Fwy (I-10 E) toward Los Angeles. Take exit #6/Robertson Blvd/Culver City onto Exposition Blvd. Turn sharp right onto Venice Blvd. Turn right onto S Durango Ave. Continue on Exposition Dr.

Parking

- Parking for large buses is available
- \$10 for cars and "yellow" school buses, and \$25 for Charter buses and oversize vehicles (cash only). To reach the parking structure, turn west into Exposition Park on 39th Street from Figueroa and follow the signs

California African American Museum

Treasures of African American art, history, and culture

**600 State Drive,
Los Angeles, CA 90037
(213) 744-7432
caamuseum.org**

The California African American Museum (CAAM) exists to research, collect, preserve, and interpret for public enrichment, the history, art, and culture of African Americans with additional emphasis on California and the western United States. The museum is a repository of more than 3,200 objects of art, historical artifacts, and memorabilia. The permanent collection includes paintings, photographs, sculpture, and artifacts representing the diverse contributions of African Americans. In addition, we host independent and collaborative educational programs both on and off site of lectures, workshops, innovative programs, and hands-on activities that serve public and private school students, as well as museum patrons and community visitors of all ages.



Visiting Information

- Tuesday through Saturday from 10:00 am to 5:00 pm
- Sunday from 11:00 am to 5:00 pm

Admission FREE

Accessibility

- The museum is equipped for handicap access throughout. There are wheelchairs available if necessary
- The museum offers docent tours Tuesday through Saturday at 10:00 am, 11:00 am, 1:00 pm, and 2:00 pm. Call 213-744-2084 at least 2 weeks in advance of a tour to secure a slot on the calendar
- Docent led tours require a minimum of 10 persons. Larger groups will be divided and assigned individual guides
- Generally tours last 45-60 minutes

Directions

From the **I-405 South**, take exit **53** toward **Los Angeles/I-10 East**. Take exit **20C** toward **Adams Blvd**. Merge onto **Figuerroa Way**. Turn right onto **State Dr**.

Parking

- Parking is \$10.00

- Enter at 39th and Figueroa Street
- There are six parking lots

Additional Information

No photography allowed in the museum.

American Military Museum

Come tour the largest collection of military equipment.

**The Whittier Narrows Recreation Center
1918 Rosemead Blvd
South El Monte, CA
(626) 442-1776
tankland.com**

Take a tour of military equipment and vehicles. The American Military Museum is committed to sharing the stories of the men, women, and vehicles of the United States Military with everyone.

Visiting Information

Self-Guided tours Friday through Sunday
from 10:00 am to 4:30 pm



Admission

- Adults: \$5.00
- Veterans & Seniors: \$4.00
- Juniors (10-16 yrs.): \$3.00
- Children (5-9 yrs.): \$1.00
- Children under 5: **FREE**
- **The museum offers FREE Friday admissions to educational non-profits.**

Accessibility

- The museum is wheelchair accessible
- Handicap restrooms are available
- Bus accessible
- The museum can take seven to seven and a half hours to view all exhibits

Directions

From **Interstate 10 Fwy E/Interstate 5 Fwy S**, exit onto **CA-60 E** toward **Pomona**. Take exit **10A** for **CA-19 N/Rosemead Blvd**. Destination will be on the right.

Parking

- Parking is wheelchair and bus accessible. Street parking is not available in the immediate area
- Parking ground is level

Additional Information

- The museum is all outdoors and therefore will be closed on rainy days
- Tours are self-guided. Informational booklets are available in English, Spanish, Traditional Chinese, Simplified Chinese, and Korean, and soon Vietnamese

- Group and school tours can be arranged at least a week ahead of time by calling during office hours. They are available Thursday and Friday by appointment only from 10:00 am to 3:30 pm

County of Los Angeles Fire Museum

Home to 60 classic and antique fire engines dating back to the 1920s

**9834 Flora Vista Street
Bellflower, CA 90706
(562) 925-0234
clafma.org**

Not just another fire museum, they have 60 antique fire engines, antique firefighting equipment, photos, uniforms, and Paramedic equipment. Their goal is to tell the history of the American Fire Service in general terms, while emphasizing the County of Los Angeles Fire Department's contributions to that history.



Visiting Information

Open the first Saturday of every month from 10:00 am to 2:00 pm

Admission

- A suggested \$5.00 donation
- Under 15 **FREE**

Accessibility

- The museum is wheelchair accessible
- Handicap restrooms are available
- Requests for group tours on other days will be considered on an individual basis
- The Bellflower show room is limited in size
- Large open lot
- Call ahead for tour

Directions

From **I-405 S/San Diego Fwy**, take **exit 45** to merge onto **I-105 E toward Norwalk**. Go 15 miles. Take **exit 17 for Bellflower Blvd**. Turn right at **Bellflower Blvd**. Go 1.8 mi. Turn left at **Flora Vista St**. Destination will be on the right.

Parking

- No parking for large buses
- Very small parking lot for museum is provided for free, but may not have space for larger vehicles if full
- No handicap parking is available
- Street parking is suggested if parking lot is full

William S. Hart Museum

Explore the house of the famous silent film star and director

**24151 Newhall Ave.
Newhall, CA 91321
(661) 254-4584 or (661) 259-0855
hartmuseum.org**

The William S. Hart Park and Museum is the former retirement home of the famed silent film actor and director who produced a series of hit Western movies in the early 20th century. His beautiful Spanish Colonial Revival Style Mansion – now the Museum – exhibits an impressive collection of Western artwork by noted artists Charles M. Russell, Frederic Remington, and Joe de Yong, as well as mementos from early Hollywood, personal furnishings and effects, and artifacts representing multiple Native American cultures.



Visiting Information

- Public tours Wednesday through Friday from 12:00 am to 3:00 pm (first tour starts at 12:00 pm, last tour starts at 2:30 pm)
- Saturday and Sunday from 11:00 am to 4:00 pm (first tour starts at 11:00 am, last tour starts at 3:30 pm)

Summer Hours (mid-June to Labor Day)

- Wednesday through Sunday from 11:00 am to 4:00 pm (first tour starts at 11:00 am, last tour starts at 3:30 pm)
- Closed Mondays and Tuesdays

Admission

FREE

Accessibility

- The William S. Hart house museum is a two story 22 room mansion so unfortunately not all areas of the mansion are wheelchair accessible. The staff and caretakers are dedicated to ensuring that each visitor enjoys the tour
- Handicap restrooms are available
- There are no special programs for disabled visitors
- No part of the facility requires visitors to read to understand or enjoy
- Handicap restrooms are available
- Parking for large buses are limited to only bubble top vans or small buses that hold up to 16 passengers
- Call beforehand to see if the museum can accommodate a large group
- To make the most of your visit, view the calendar for events on the website

Directions

Take **I-5 North** to **CA-14 North** toward **Palmdale/Lancaster**. Exit **San Fernando Rd. /**, Merge onto **CA-14 N** via **EXIT 162** toward **PALMDALE/LANCASTER**. Take the **SAN FERNANDO RD** exit, **EXIT 2**, Take the **SAN FERNANDO RD/CA-126** ramp, Turn **SLIGHT RIGHT** onto **NEWHALL AVE/SAN FERNANDO RD/CA-126**.

The Old Plaza Firehouse

The oldest fire station in the city of Los Angeles

**501 N. Los Angeles
Los Angeles, CA 90012
(213) 485-8437
elpueblo.lacity.org**



The Plaza Firehouse was the first building in the city designed to house firefighting crews and their equipment. A volunteer city Fire Department was formed in 1871. The first occupants of the Firehouse when it was built in 1884 were called the Volunteer 38s (this being the number of men in Engine Company No 1.) The Plaza Firehouse has been restored and converted into a museum which displays firefighting equipment of the late nineteenth and early twentieth centuries

Visiting Information

Open Tuesday through Sunday from 10:00 am to 3:00 pm

**Admission
FREE**

Accessibility

- Handicap bathrooms are available behind the building
- Please call 213-628-1274 to reserve a tour for groups of over 10 visitors
- Wheelchair ramps are available

Directions

From the **US-101 S**, take **exit 3A for Broadway**. Merge onto **W Aliso St**. Turn **left** onto **N Los Angeles St**.

Parking

There are private parking lots across the street. There is a large entrance for buses behind the Firehouse.

Academy of Motion Picture Arts and Sciences

The world's leading movie museum in the heart of Los Angeles.

8949 Wilshire Blvd.
Beverly Hills CA 90211
(310) 247-3000
Fax: (310) 859-9619
oscars.org



Galleries in the Grand Lobby and on the Fourth Floor offer free exhibitions that are open to the public. Galleries feature film related exhibits such as costumes, advertising posters, etc. The Academy also has special events and exhibitions during the year. For more information on these special events, see their website.

Visiting Information

- Open Tuesday through Friday from 10:00 am to 5:00 pm
- Saturday through Sunday from 12:00 pm to 6:00 pm
- Closed Mondays and major holidays

Admission
FREE

Accessibility

- All areas are wheelchair accessible
- No special programs provided for disabled
- Handicap bathrooms available for men and women
- No parking for large buses
- No hands-on exhibits
- No part of the facility requires visitors to read to understand or enjoy
- Listening devices for the hearing impaired are available
- No photography is allowed

Directions

From **I-405** take **Exit 55B** for **Wilshire Blvd E**. Merge onto **Wilshire Blvd**. Continue **2.8 miles**. Make a slight left to stay on **Wilshire Blvd**. Destination will be on the **left, 1.3 miles** ahead.

Parking

Complimentary parking is provided in structures located at 8920 Wilshire Blvd (enter off La Peer) and at 9025 Wilshire Blvd. (Spaces are often filled early)

Alhambra Historical Society Museum

A collection of historical items from Alhambra's rich history

**1550 W. Alhambra Road
Alhambra, CA 91801
(626) 300-8845
alhambrahistosocinc@sbcglobal.net
<https://sites.google.com/site/alhambrahistoricalsociety>**



In 1966, at the invitation of Mayor Norma Yocum and Fred Turner, a group of long-time Alhambra residents and civic leaders met for the purpose of forming an organization to be known as The Alhambra Historical Society, Inc. The group was dedicated to the acquisition and preservation of documents, artifacts and historical records of the City of Alhambra and its residents. The Society commemorates historical events and honors persons who have played a part of Alhambra's history.

Visiting Information

- Open to the public the second and fourth Thursday of the month from 2:00 pm to 4:00 pm.
- Open by appointment all other days

**Admission
FREE**

Accessibility

- Historical Society is handicap accessible
- Handicap accessible restroom is available, but may not accommodate larger wheelchairs
- Parking close to the museum could be an issue, especially for oversized vehicles or those with a side wheelchair lift

Directions

From the **I-210 E toward Pasadena**, continue onto the **Long Beach Fwy**. Continue onto **S St John Ave**. Continue onto **S Pasadena Ave**. Turn left at **Columbia St**. Take the 1st right onto **Fremont Ave**. Turn left at **Huntington Dr**. Turn right at **N Electric Ave**. Turn right at **W Alhambra Rd**. Destination will be on the left.

Parking

- Parking is available on nearby streets
- The streets directly around the Historical Society have limited or no parking, however parking can be found a block or two away on side streets
- Bus parking is not available

- The sidewalk directly in front of the museum is about 6 feet wide and could support the loading/unloading of a vehicle with a side lift directly in front of the museum walkway

The Nethercutt Museum

Featuring classic, vintage, antique, and special interest automobiles

**15151 Bledsoe Street
Sylmar, CA 91342
(818) 364-6464
nethercuttcollection.org**

The Nethercutt Collection features rare collectibles ranging from mechanical musical instruments and antique furniture to the true heart of the collection: over 250 American and European automobiles dating from 1898 to 1997.



Visiting Information

- Open Tuesday through Saturday from 9:00 am to 4:30 pm
- Tours available Thursday, Friday, and Saturday at 10:00 am or 1:30 pm
- Make tour reservations in advance
- No outside food or beverages allowed in the museum

Admission

FREE

Accessibility

- All areas are wheelchair accessible
- Does not provide special programs
- Some parts of the facility require visitors to read to understand or enjoy
- Handicap restrooms are available
- It takes roughly one hour to tour the entire facility

Directions

Merge onto **CA-118 E**. Take exit **42A** to merge onto **I-405 N** toward **Sacramento**. Merge onto **I-5 N**. Take **exit 159A** for **Roxford St E** toward Sylmar. Turn **right** onto **Roxford St**. Turn **right** onto **San Fernando Rd**. Take the **1st left** onto **Bledsoe**.

Parking

- Buses are permitted to unload passengers or park in the museum parking lot
- Handicap parking is available

The Ararat-Eskijian Museum

Preserving Armenian culture and historical treasures for generations to come

**Ararat Home of Los Angeles
15105 Mission Hills Road
Mission Hills, CA 91345
(818) 838-4862
ararat-eskijian-museum.com**

The Ararat-Eskijian Museum was created to enrich, inspire and educate the community through the display of artworks and exhibits, presentation of programs, and collection of research materials, featuring the history and cultural heritage of the Armenian people.



Visiting Information

- Open Saturday and Sunday from 1:00 pm to 5:00 pm
- First Tuesday of each month from 1:00 pm to 3:00 pm
- Closed Monday through Friday

**Admission
FREE**

Accessibility

- All areas are wheelchair accessible
- There are no special programs for the disabled
- No part of the facility requires visitors to read to understand or enjoy
- Handicap bathrooms are available
- The museum is located on the bottom floor of the Sheen Memorial Chapel, directly behind Providence Holy Cross Medical Center
- Allow 30-45 minutes to go through the museum

Directions

The museum is located in the Ararat Home of Los Angeles, on bottom floor of the Sheen Memorial Chapel.

From **I-405 N** exit **Rinaldi Street**. At the light (**Sepulveda Blvd.**) turn **left**. Turn **right** onto **Rinaldi St**. Turn **left** onto **Indian Hills Rd**. Turn **left** onto **Mission Hills Rd**. The Driveway is on the **right**.

From **1-5 N**, take **exit 157B/San Fernando Mission Blvd**. Keep **right** at the fork to continue toward **W San Fernando Mission Blvd**. Turn **right** at W San Fernando

Mission Blvd. Turn **left** at **Laurel Canyon Blvd.** Take the **1st left** onto **Rinaldi St.** Take the **1st right** onto **Indian Hills Rd.** Take the **1st left** onto **Mission Hills Rd.** Destination will be on the **right**.

Parking

- Parking is available in an open air lot
- Parking is available for large buses
- Oversized vehicles with a side lift and buses could be accommodated
- Please call to ensure that parking is available

The Ruth and Charles Gilb Arcadia Historical Museum

The Early Days of Arcadia

**380 West Huntington Drive
Arcadia, CA 91006
(626) 574-5440
ci.arcadia.ca.us**

Ruth and Charles Gilb Arcadia Historical Museum collects, preserves, and recognizes Arcadia's heritage to create a shared identity for a diverse community and to celebrate the City's rich history with exhibits and educational programs that will encourage community involvement.



Visiting Information

- Open Tuesday through Saturday from 10:00 am to 4:00 pm
- Closed on Sundays and Mondays
- Tours are admission free
- Special arrangements may be made for group tours, call for more information
- Reservations must be submitted 3 weeks prior to the requested date of visit
- Tours are approximately an hour to an hour and a half. Call the Museum if your group is running late

Accessibility:

- Please let the museum know if anyone in your group requires special assistance
- All areas of the museum are wheelchair accessible
- Bathrooms are accessible, marked, and wheelchair friendly
- Parking lot in front of the museum can accommodate large buses

Directions

Start out going **East** on **Sherman Way** toward **Kelvin Avenue**. Turn **Right** on **Winnetka Avenue**. Turn **Left** to take the **Ventura Freeway East / US-101 East** ramp. Merge onto **US-101 South**. Take **CA-134 East** toward **Burbank/Glendale**. Merge onto **I-210 East**. Take the **Baldwin Avenue** exit, **Exit 31**. Turn **right** onto **North Baldwin Avenue**. Turn **left** onto **West Huntington Drive**. **380 West Huntington Drive** is on the **left**.

Parking

- Parking is available in front of the museum for small and medium size buses and has 2 handicap spaces
- Special ramps for wheelchairs are available

- Free parking available next to the museum entrance at West Huntington and at the Arcadia Community Center at Campus Drive and West Huntington (the museum is east of the community center across the lawn)

The Autry in Griffith Park

A museum dedicated to the history of the West

**4700 Western Heritage Way
Los Angeles, CA 90027
(323) 667-2000
Fax: (323) 660-5721
theautry.org**

The Autry encompasses three institutions: The Museum of the American West, the Museum of the American Indian, and the Institute for the Study of the American West. The museum of the American West includes exhibits related to life on the frontier in early times.



Visiting Information

- Tuesday through Friday from 10:00 am to 4:00 pm
- Saturday and Sunday from 10:00 am to 5:00 pm
- Closed Mondays, 4th of July, Labor Day, Thanksgiving, and Christmas

Summer Hours:

Thursdays in July and August, the museum and Autry store are open from 10:00 am to 8:00 pm.

Admission

- Autry Members: **FREE**
- Adults: \$9.00
- Students with current ID and Seniors (60+): \$5.00
- Children (3-12): \$3.00
- Children under 3: **FREE**
- **FREE** for active military personnel, veterans, peace officers, and park rangers with current ID
- **FREE to the public on the second Tuesday of every month**

Accessibility

- All areas of the museum, including restrooms, are wheelchair accessible
- Free wheelchairs are available for check-out on a first-come, first-served basis
- Audio Guides are available for \$3.00 (free for members)
- There are no special programs for the disabled
- No part of the museum requires visitors to be able to read to understand or enjoy
- Group tours are available and can save more than 25%. Please call to make reservations and rates

Directions

Take the **101S** to the **134 E (Burbank/Glendale)** to **I-5N** and **exit Victory Blvd.** Go to **Riverside Dr.** and make a **right** turn. Go to **Zoo Dr.** and turn **left**. Continue onto **Western Heritage Way** and stay to your **left**.

Parking

- There is plenty of free parking at 4700 Western Heritage Way off Crystal Springs Drive.
- Open air parking lot with 6-7 handicap parking spaces
- If space is available, there is room for buses and/or larger vehicles
- To use public transportation, go to the Museum website. Under Planning Your Visit, Maps & Directions there is a link on the web site to assist you in planning your route

Getty Center

See spectacular art and architecture at the top of Los Angeles

**1200 Getty Center Drive
Los Angeles, CA 90049
(310) 440-7300
E-mail: groups@getty.edu
getty.edu**

Visit numerous buildings and galleries, as well as an outdoor sculpture garden. Buildings focus on various types of art or artifacts from a wide range of places and times.



Visiting Information

- Tuesday through Friday from 10:00 am to 5:30 pm
- Saturday from 10:00 am to 9:00 pm
- Sunday from 10:00 am to 5:30 pm
- Closed Mondays, January 1, July 4, Thanksgiving, and December 25

Admission FREE

Accessibility

- All areas are wheelchair accessible. Standard wheelchairs are available at the Lower Tram Station and at the coat check desk in the Museum Entrance Hall
- For special programs and nonprofit tours, see Special Programs
- No part of the facility requires visitors to read to understand or enjoy
- All public restrooms include accessible facilities
- The family restroom, located in the South Pavilion of the Museum, includes a breast-feeding station and private facilities where you can assist a companion
- Parking for large buses is available. Call for more information
- Handicap accessible parking is available on the lowest level of the parking structure
- Front and rear row seating is available in the Harold M. Williams Auditorium for visitors using wheelchairs. Please arrive early. Staff is available to assist you
- Sign language interpretation is available for all public programs on request. Requests must be made 10 days in advance by calling Visitor Services at (310) 440-7300 (hearing), or (310) 440-7305 (TTY for the deaf or hearing-impaired)
- The tram from the street-level parking facility to the top of the hill is fully accessible
- Free listening devices are available for all gallery and architectural tours as well as the Orientation Theater. They are also available for all programs in the Harold M. Williams Auditorium and Lecture Halls

- Please note that lighting in the photographs, manuscripts, and drawings galleries may be dimmed to protect the art

Directions

The Getty Center is located near the intersection of the **San Diego Freeway (Interstate 405)** and the **Santa Monica Freeway (Interstate 10)**. Take the **Getty Center Drive** exit from the **405** and follow the signs to the main gate on **Sepulveda Boulevard**. Please note that there is no public access to the Getty Center from the residential neighborhood to the south. Access to the Getty Center entrance is only via the main gate on Sepulveda Boulevard.

Parking

- While admission is free, there is a fee for parking. Cars \$15; Oversize Vans/Limousines \$35; Mini-coach (>30 seats) \$65; Bus (30+ seats) \$130. *Please pay in advance by check or credit card*
- **Registered nonprofit organizations are exempt from parking fees for oversize vehicles** (not for cars). Please provide a valid Federal Tax ID number when making the reservation
- Parking is **FREE** for all evening public programming, including theater, music, film, lectures, and other special programs held after 5:00 p.m
- Parking is based on availability. Parking reservations are neither required nor accepted, except for nonprofit groups with oversized vehicles. Street parking in the surrounding neighborhood is restricted
- There are designated handicap accessible spaces on the entry level of the parking structure. Parking for **vehicles between 6'10" and 12'6" tall** and of standard car length is available on level P1 of the parking structure. There is no parking for RVs, motor homes, limousines, and other large vehicles. **For group buses and oversized vans, call for reservations**

Additional Information

- A computer-operated tram takes you from the street-level parking facility to the top of the hill.
- When arriving at or departing from the Getty Center, please allow plenty of time for tram lines on busy days.
- The tram is fully accessible.
- **Special Programs**
For **nonprofit organizations**, a Getty Museum gallery teacher leads a one-hour tour of the Museum. Limited to 50 people. Choose from a highlights tour, select a theme for your group, or tour an exhibition
- Registered nonprofit organizations can also self-guide groups through the galleries and exhibitions. Please pick up an "Educator" badge at the Museum Information desk (be prepared to show nonprofit organization identification), and divide your group into groups of 15 or fewer before entering the galleries
- Visit their website and click on "Things to See and Do", "Tips for Groups", and "Tips for Families" for ideas about exploring the gardens and architecture

Getty Villa

Visit the ancient world of Greece and Rome

**17985 Pacific Coast Highway
Pacific Palisades, CA 90272
(310) 440-7300
E-mail: groups@getty.edu
getty.edu**

The Getty Villa is an educational center and museum dedicated to the study of the arts and cultures of ancient Greece, Rome, and Etruria. The collection has 44,000 Greek, Roman, and Etruscan antiquities dating from 6,500 BC to 400 AD, including the Lansdowne Heracles and the Victorious Youth.



Visiting Information

Open Wednesday through Monday from 10:00 am to 5:00 pm

Closed Tuesdays, January 1, July 4, Thanksgiving, and December 25

Admission

FREE

Accessibility

- All areas are wheelchair accessible. Standard wheelchairs are available without charge on a first-come, first-served basis in the Entry Pavilion
- For special programs and nonprofit tours, see Special Programs
- No part of the facility requires visitors to read to understand or enjoy
- All public restrooms include handicap accessible stalls and baby-changing facilities
- Parking for large buses is available. Call for more information and a reservation
- Handicap parking is available on the lowest level of the parking structure
- For special programs and nonprofit tours, allow about one hour. Self-guided tours take about three hours
- Hands-on activities are available in the Family Forum. Check the website under "Tips for Families" for more information
- Front and rear row seating is available in the Auditorium and the Outdoor Classical Theater for visitors using wheelchairs and for their companions. Please arrive early to reach this area before programs begin. Visitor Services staff are available to assist you
- Sign language interpretation is available for all public programs on request. Requests must be made 10 days in advance by calling Visitor Services at (310) 440-7300, or (310) 440-7305 TTY for the deaf or hearing-impaired

- Listening devices are available for a nominal fee for all gallery and site tours at the Tour Meeting Place. They are also available at the Information Desk in both the J. Paul Getty Museum and the Auditorium
- Please note that lighting in exhibition galleries containing photographs or drawings may be dimmed to protect the art

Directions

From Route 1 (Pacific Coast Highway) go **north** along the **Pacific Ocean**. Continue on Route 1 for approximately five miles to the Getty Villa. **Visitors must approach the Getty Villa from the south.** Access to the Villa entrance is only from the **northbound right-hand lane of Pacific Coast Highway**. Turning **left** across PCH is illegal and any attempt to enter the site via Coastline Drive is not permitted

Parking

- On-site parking is available for all ticket holders. Each visitor to the Getty Villa must have an advance, timed ticket; separate parking reservations are neither required nor accepted
- There is a fee for parking. Cars \$15; Oversize Vans/Limousines \$35; Mini-coach (up to 30 seats) \$65; Motorcoach (30+ seats) \$130. *Please pay in advance by check or credit card*
- Parking is **FREE** for all evening public programming, including theater, music, film, lectures, and other special programs held after 5:00 pm
- **Registered nonprofit organizations are exempt from parking fees for oversize vehicles** (not for cars). Please provide a valid Federal Tax ID number when making the reservation
- Oversized Vehicles: Parking is available for vehicles **up to 6'10"** in height and of standard car length and width. There is no parking for RVs, motor homes, limousines, and other larger vehicles

Special Programs

- Nonprofit Organizations can arrange a one-hour tour of the permanent collection and changing exhibitions. We may be able to accommodate interests in particular themes or works of art. These tours are limited to 40 people and are available in English or Spanish
- Registered nonprofit organizations can also self-guide groups through the galleries and exhibitions. Please pick up an "Educator" badge at the Museum Information desk (be prepared to show nonprofit organization identification), and divide your group into groups of 15 or fewer before entering the galleries
- GettyGuide™ Audio Players are available for a nominal fee. Visit the website and click on "Things to See and Do", "Tips for Groups", and "Tips for Families" for ideas about exploring the gardens and architecture, to view the event calendar, or to discover special activities such as solving a mystery on an art detective hunt or join an Art Odyssey

Fowler Museum at UCLA

Explore art and artifacts from around the world

308 Charles E. Young Drive North
Los Angeles CA 90095
(310) 825-4361
Fax: (310) 206-7007
fowlerws@arts.ucla.edu
fowler.ucla.edu



The Fowler seeks to enhance understanding and appreciation of the diverse peoples, cultures, and religions of the world. The collections comprise more than 150,000 art and ethnographic pieces and 600,000 archaeological objects representing ancient, traditional, and contemporary cultures of Africa, Native and Latin America, Asia, and the Pacific. Including Yoruba beaded arts of Southern Nigeria, pre-Columbian ceramic vessels of Peru, elaborate batik textiles of Indonesia, and the vibrant papier-mâché sculptures of Mexico.

Visiting Information

- Open Wednesday, Friday, Saturday, and Sunday from 12:00 pm to 5:00 pm
Thursday from 12:00 pm to 8:00 p.m.
- Closed Monday, Tuesday, and all major holidays.

Admission FREE

Accessibility

- The museum is wheelchair accessible
- There are no special programs for disabled visitors
- No part of the museum requires visitors to read to understand or enjoy
- Drivers will be able to load and unload with a side lift across the street from the museum or in any available street parking space
- **Free bus parking** is available near the Museum
- School and group tours in English and Spanish are free to the public and can be arranged by calling the Museum's Education Department at (310) 206-5663
- The Fowler Museum is located in the heart of UCLA's north campus
- To make the most of your visit, check out the website and calendar of events

Directions

Take the **I-405 S** and exit at **Sunset**. Turn left onto **Sunset Blvd.** Enter UCLA campus lot 4 from **Sunset Blvd.** at **Westwood Plaza**.

Parking

Easy self-service, pay-by-space parking is available near the museum. Enter UCLA campus lot 4 from Sunset Blvd. at Westwood Plaza and turn left into the pay-by-space area of the lot. Pay-by-space parking is **always** available for Fowler visitors, regardless of whether the lot 4 parking kiosk is staffed! Automated pay stations accept \$1 and \$5 bills and credit cards. The parking fee is a maximum of \$10. The Fowler is visible to your left when you ascend from the elevator or stairs.

For groups coming to the Fowler via a bus, **free bus parking** is available near the Museum. To reach this designated bus zone, enter campus from Sunset Blvd. at Westwood Plaza. Take the first right onto Charles Young Drive and park along the right side of the street, across from the athletic fields.

Additional Information

Guided exhibition tours are **free**. A minimum of 15 people is required. Tours with gallery educators last approximately an hour. Reservations are accepted throughout the year. Group tours may be scheduled Wednesday through Friday between 12:00 pm and 5 pm, and on Thursday evenings until 7 pm. No weekend tours are available. **Advance reservations are required** for all groups. To schedule Group visit info call: (310) 206-5663.

The Wende Museum

An extensive collection of Cold War memorabilia

**5741 Buckingham Pkwy
Culver City, CA 90230
(310) 216-1600
wendemuseum.org**

The museum's name, The Wende Museum, is from German words meaning "turning point" and is a reference to the fall of the Soviet Union and the conclusion to the Cold War that had so many people fearing nuclear war between the United States and Communist powers. The museum has an extensive collection of historical artifacts from the Cold War era and proudly exhibits them to teach about the feeling and the tone of the Cold War.



Visiting Information

- Open **by appointment only** Monday through Thursday from 10:00 am to 5:00 pm
- Open **without an appointment** Friday from 10:00 am to 5:00 pm

**Admission
FREE**

Accessibility

- Many of the exhibits are open and wheel chair accessible
- The museum is only one story
- Handicap restrooms are not currently available, but will be after a remodel scheduled for 2016
- There is limited parking available
- A few exhibits may require visitors to read to understand or enjoy them.

Directions

Take the **I-405S** and then take the **exit 50B** toward **Slauson Avenue**. Merge onto **CA-90E** and make a **right** at **W Slauson Avenue**. Take the **2nd left** onto **Buckingham Parkway**, at the **stop sign**, turn towards your **left**. Go **into the parking** lot and follow it **until the end, Suite E**.

Parking

There is parking available only in spaces with "Wende Museum" labels. Please note that there is very little parking available and none for buses.

Additional Information

- For visits by groups of ten or larger please call to arrange an appointment: (310) 216-1600 x309
- It is recommended to schedule tours at least 48 hours ahead of time to ensure availability
- Special Events are usually ticketed events or by invitation only. Join the Museum's email subscription list to receive invitations and advance notice of special events and other activities
- To find out about featured collections and exhibits, please call ahead

Griffith Observatory

Learn about the space and the stars

2800 East Observatory Road
Los Angeles, CA 90027
(213) 437-0800
griffithobservatory.org

Sparkling imagination and inquiry through exposure to the awe and wonder in astronomy is the goal of the new Griffith Observatory exhibit program. Each visitor is cast in the role of an observer and provided with opportunities to do real observing in authentic environments. Explore the fundamental questions: what do we observe, how do we observe it, and why is it important? The exhibits prompt visitors to ponder their own relationship with the universe.



Visiting Information

- Open Tuesday through Friday from 12:00 pm to 10:00 pm
- Saturday and Sunday from 10:00 am to 10:00 pm
- Closed Monday, Thanksgiving, and December 25
- Entrance to the observatory is **FREE**
- Tickets for the show "Centered in the Universe" in the Samuel Oschin Planetarium Theater are purchased separately at the box office within the observatory. Tickets are sold on a first-come, first-served basis. Children under 5 are free, but are admitted to only the first planetarium show of the day. Only members of the Friends of the Observatory may reserve tickets.

Accessibility

- All areas of the Observatory are wheelchair accessible
- Each level has elevator access and some are accessible by ramp
- Both theaters – Samuel Oschin Planetarium and Leonard Nimoy Event Horizon – offer assisted listening devices (ALDs) upon request
- The regularly scheduled film ("The Once and Future Griffith Observatory") in the Leonard Nimoy Event Horizon also has open captioning upon request
- There are no special programs for the disabled. The staff will gladly accommodate visitors to the programs
- The Observatory can also make additional accommodations for visitors with special needs with advance notice; please call (213) 473-0800, and ask for the Operations staff
- No part of the facility requires visitors to read to understand or enjoy.
- Handicap bathrooms are available

- Planetarium shows are approximately 35 minutes long
- Take the virtual tour before you go and plan your trip to get the most out of your visit

Directions

From **Interstate 5**, Take the **Los Feliz Blvd West exit, Exit 141**, toward Hollywood, Merge onto **Los Feliz Blvd**, Turn **right** onto **Hillhurst Ave**. Turn **slight right** onto **N Vermont Ave**. N VERMONT AVE becomes **Vermont Canyon Rd**. Turn **left** onto **E Observatory Rd**.

Parking

- Parking is available in 1550 Lot 1 North or on the adjacent streets.
- The Observatory Parking area is quite small and has limited access for vehicles.
- Parking is available on the streets leading up to the observatory. Be aware that, since the observatory is on a hill, parking on nearby streets requires an uphill walk.
- There is no parking for larger vehicles or buses.
- Disabled shuttles and buses (whether disabled or not) will be passed through at all times, even when lot is full, to drop off at the horseshoe driveway in front of the building
- If you have a disabled person, you are welcome to drop them off at the horseshoe and then find parking

Hollywood Bowl Museum

Learn of the many bands and artists who have performed in this historic concert venue

**2301 N. Highland Ave.
Los Angeles, CA 90075
(323) 850-2058
museum@laphil.org
hollywoodbowl.com**

The Hollywood Bowl Museum features photographs, audio and video recordings, memorabilia and artifacts about the history of the Hollywood Bowl and performances. The museum includes the Hollywood Bowl Hall of Fame, whose honorees include John Williams, Reba McEntire, Garth Brooks, Stevie Wonder, Brian Wilson, Henry Mancini, Sarah Chang, Bernadette Peters, Frank Sinatra and more.



Visiting Information

Summer hours (June 20-Sept 27)

- Open Tuesday through Saturday from 10:00 am until show time
- Sundays from 4:00 pm to show time
- Closed Monday

Off-Season hours (Sept 28-June 19)

- Tuesday through Friday from 10:00 am to 5:00 pm
- Saturdays for groups of 30+ by appointment only
- Closed Sunday and Monday

Admission

FREE

Accessibility

- All areas are wheelchair accessible with elevator and ramp to allow access to the second floor
- There are no special programs provided for disabled visitors
- No part of the museum requires visitors to read to understand or enjoy
- Handicap bathrooms are available
- Parking is available for large buses
- The amount of time needed to tour the Museum is 1 hour
- Senior citizen groups, tour groups, and others can visit the museum by appointment. Your visit includes a walking tour of the Hollywood Bowl and a

museum visit. Ask about an activity if your group includes children. We offer docent-lead tours and self-tours. For information and appointments, call the museum at (323) 850-2058 or send an e-mail to museum@laphil.org with the following information: Name of school/group, full address, contact person and phone number, date of visit (1st, 2nd, and 3rd choices), number of guests, grade level if students

- Group size: 70 maximum. School groups must provide one adult for each ten children
- Your visit consists of a walking tour of the Hollywood Bowl, music education activities, an arts and crafts project, and a museum tour
- Picnic areas are open throughout the Hollywood Bowl. You may bring lunches and picnic following your visit
- Groups may attend rehearsals of the Los Angeles Philharmonic and Hollywood Bowl Orchestra during the summer
- In the event of rain, Museum and Bowl tours are cancelled

Directions

From **US-101 S** take **exit 9C** toward **Highland Ave/Hollywood Bowl**. Turn **slight right** onto **Cahuenga Blvd W**. **Cahuenga Blvd W** becomes **N Highland Ave**. The museum is located on the grounds of the Hollywood Bowl next to the Museum Patio.

Parking

- **Free** Tuesday through Friday from 10:00 am to 5:00 pm, Saturday all day, and Sunday from 3:00 pm to 8:00 pm
- If there is a concert scheduled, parking is free until the concert starts. Check Bowl calendar of events on their website

Page Museum

Explore amazing fossils and learn about prehistoric animals

This information is for the museum only. Grounds and dig site information is located under La Brea Tar Pits.

**5801 Wilshire Blvd.
Los Angeles, CA 90036
(323) 934-PAGE (7243)
tarpits.org**

The Page Museum houses fossil discovered in the La Brea Tar Pits and provides information on the animals and people living in the area in prehistoric times.

Visiting Information

- Open daily from 9:30 am to 5:00 pm
- Closed July 4th, Thanksgiving, Christmas and New Year's Day.



Admission

Adults: \$7.00

Seniors (62+) and students with ID: \$4.50

Children (5-12): \$2.00

FREE to members and children under 5

FREE on the 1st Tuesday of every month

Accessibility

- All areas are wheelchair accessible
- There are no special programs for disabled visitors
- No part of the facility requires visitors to read to understand or enjoy
- Handicap bathrooms are available
- Parking is available for large buses
- It takes about 3 hours to tour the facility. At 2:00 pm daily there is a guided Gallery Exploration Tour
- Group Tours are available and have discounted admission fees. Check the website or call for more information

Directions

Follow the **101 South** to the **Highland Ave.** exit. Follow **Highland Ave south** to **Wilshire Blvd.** Turn right on **Wilshire Boulevard.** Drive 15 blocks to **Curson Ave.** Turn right on **Curson Avenue.** The parking lot will be on the left-hand side at the end of the block.

Parking

- **There is a Handicap Entrance with a ramp.** Once you arrive at the ramp, ring the bell and a museum employee will come to assist you. Wheelchairs must enter the museum this way, as the Museum entrance has stairs
- The Museum's parking lot is an open lot located at the corner of Curson Ave and 6th St, directly behind the museum (enter from the western side of Curson Ave)
- Monday through Friday \$1.50 per 20 minutes to a maximum of \$9.00 (or \$7.00 with Museum validation)
- Saturday, Sunday, and Holidays \$7.00 flat rate
- Be sure to bring your parking ticket into the museum to receive your validation
- **Important note about parking:** If you choose street parking over the museum lot, please read all parking signs carefully, as restrictions apply. *Most importantly, DO NOT PARK ALONG WILSHIRE BOULEVARD between the hours of 7-9am and 4-7pm (Mon – Fri) or your car will be ticketed and towed. This applies even if you are parked at a meter*

Korean Cultural Center

Dedicated to Expanding Knowledge of Korea

**5505 Wilshire Blvd
Los Angeles CA 90036
(323) 936-7141
(323) 936-5712
kccla.org**



The Korean Cultural Center welcomes the general public to experience the rich traditions and history of Korea through specialized programs, sponsored events, and multiple learning resources. Operated by the Korean government's Ministry of Culture, Sports and Tourism, the Korean Cultural Center is dedicated to providing insights into the rich cultural heritage of Korea. Visit and learn something new about a nation with a history spanning more than 5,000 years.

Visiting Information

- Open Monday through Friday from 9:00 am to 5:00 pm
- Saturday from 10:00 am to 1:00 pm
- Closed Sundays, major holidays (closed Saturday if a holiday falls on a Friday or the following Monday), and Korean Holidays

Admission

The tours are available at no cost (limit 70 persons per group)

Accessibility

- All areas are wheelchair accessible
- No part of the facility requires visitors to read to understand or enjoy
- Handicap restrooms are available

Directions

From **US-101 S**, Take **exit 9C** toward **Highland Ave/Hollywood Bowl**. Turn **slight right** onto **Cahuenga Blvd W**, **Cahuenga Blvd W** becomes **N Highland Ave**. Turn **Right** onto **Wilshire Blvd**.

Parking

- Numerous parking lots are open in the surrounding area (dubbed Museum Mile)
- Buses usually drop off at the front door, then park at La Brea Tar Pits/George Page Museum 5 block away, (less than half a mile) west of KCCLA on the corner of Wilshire and Curson or on Dunsmuir St. if there are enough spaces
- There is free bus parking at the LA Tar pits area for buses. Buses can also enter the parking lot in the back, but sometimes the lot is filled, making it difficult to maneuver

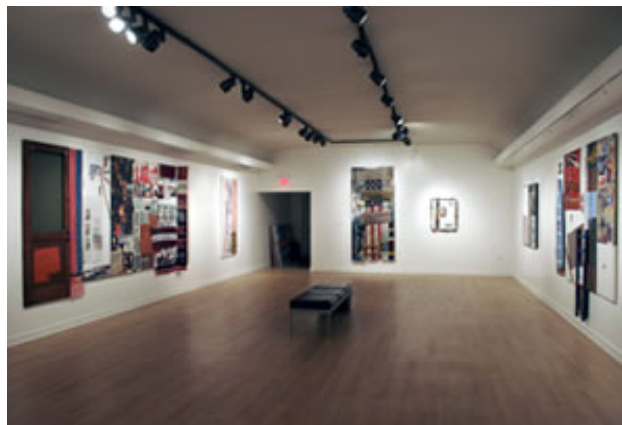
Art Museums

USC Fisher Museum

Five Centuries of Art

**823 Exposition Blvd
Los Angeles, CA 90089
(213) 740-4561
<http://fisher.usc.edu/>**

This is one of the first museums in Los Angeles dedicated exclusively to the exhibition and collection of fine art, containing a permanent collection of some 1,800 objects, including 19th century American landscapes, 16th and 17th century Northern European paintings, British portraiture, French Barbizon paintings, as well as 20th century paper painting and sculptures.



Visiting Information

- Open Tuesday through Friday from 12:00 pm to 5:00 pm
- Saturday from 12:00 pm to 4:00 pm
- Closed Sundays and Mondays
- Closed USC football game days
- Closed during summer months
- Closed on university holidays

**Admission
FREE**

Accessibility

- All areas of the facility are wheelchair accessible
- There are no special programs for disabled visitors
- No part of the facility requires visitors to read to understand or enjoy
- Handicap restrooms are not available in the museum, but there are some near the facility
- Estimated time to get through the whole facility is an hour

Parking

- No parking for large buses
- There is a drop off point if needed

California Northridge Art Gallery

A major art exhibition space in the San Fernando Valley

**18111 Nordhoff Street
Northridge, CA, 91330
(818) 677-2226
csun.edu/mike-curb-arts-media-communication/art-galleries**

The Art Galleries at California State University, Northridge, are the major art exhibition space in the San Fernando Valley. Serving the University campus, the San Fernando Valley, and the greater Southern California communities, the Art Galleries offer an exhibition program that reflects the extraordinary diversity of the art world today and of the many audiences. Through a program of innovative and often provocative exhibitions, the galleries utilize regional resources to give fresh perspectives on international art and the broad interrelationships of today's visual world.



Visiting Information

- Monday through Saturday from 12:00 pm to 4:00 pm
- Thursday from 12:00 pm to 8:00 pm
- Closed Sundays and holidays

Admission FREE

Accessibility

- All areas are accessible by wheelchair.
- Special programs may be offered if requested in advance.
- No part of the facility requires visitors to read to understand or enjoy.
- Handicap restrooms are available.
- Parking for large buses must call in advance to receive directions.
- Length of visit may vary, a few hours at most.

Directions

From the **405 Freeway Exit Nordhoff St**, going west. **Turn right** on **Reseda Blvd**. **Turn right** on **Halstead St**. **Turn right** into **Lot D6** for parking.

Parking

Parking in all lots is \$6.00 per day/24 hours per day/seven days a week. Purchase a parking permit from Info Booth at Lindley/Nordhoff or Prairie/Darby Gates or at self-serve dispensers in all student lots.

Additional Information

- Please note that this information is for the **Main Gallery** only; information concerning the **West Gallery** may be different
- Information given for parking is mainly for individual cars and very small buses. For larger units of transportation more direct information should be asked for
- To contact the director of the Gallery, Jim Sweeters, jim.sweeters@csun.edu (818-677-3060)
- To contact the Office Manager/Exhibition Coordinator, Michelle Giacomuzzi, michelle.giacopuzzi@csun.edu (818-677-2156)
- For information please email: artgalleriesinfo@csun.edu
- Office telephone number is: (818) 677-2156
- Exhibition informational line is: (818) 677-2226

Annenberg Space for Photography

A new paradigm in the world of photography

**2000 Avenue of the Stars #1000,
Los Angeles, CA
(213) 403-3000
annenbergspaceforphotography.org**

The Annenberg Space for Photography is a cultural destination dedicated to exhibiting both digital and print photography in an intimate environment. The space features state-of-the-art, high-definition digital technology as well as traditional prints by some of the world's most renowned photographers and a selection of emerging photographic talents as well.

Visiting Information

- Wednesday through Sunday 11:00 am to 6:00 pm
- Closed Monday and Tuesday

Admission FREE

Accessibility

- Ramps near entrance
- Handicap restrooms available

Directions

From the **US-101 S** take **exit 19A** for **I-405 S/San Diego Fwy**. Merge onto **I-405 S**. Take **exit 55A** toward **CA-2/Santa Monica Blvd**. Merge onto **Beloit Ave**. Turn **right** onto **Avenue of the Stars**.

Parking

- Validated self-parking is \$3.50 for three hours in the garage directly beneath the building on Wednesday through Friday before 4:30pm and all day on Saturday and Sunday with a flat rate of \$1.00 with validation



Vincent Price Art Museum

Art all under one magnificent roof

**1301 Avenida Cesar Chavez
Monterey Park, CA 91754
(323) 265-8841
vincentpriceartmuseum.org**



Vincent Price Art Museum (VPAM) has had a presence on the campus of East Los Angeles College (ELAC) for more than fifty years. In 1951, Vincent Price—noted actor, collector and one of Los Angeles’s great champions of the arts—made his first visit to ELAC. Together with his wife Mary Grant, Vincent Price was a frequent visitor here, a speaker at graduation ceremonies and a classroom guest who eagerly engaged with our students and faculty. As he got to know ELAC, Mr. Price noticed a lack of opportunity for students on this campus—and in East LA in general—to have first-hand experiences with art. The Prices took the initiative to remedy this shortcoming and donated 90 pieces from their personal collection in 1957 to establish the first “teaching art collection” housed at a community college. In recognition of this extravagant gift, ELAC renamed the art gallery in the Prices’ honor.

Visiting Information

- Tuesday, Wednesday, Friday and Saturday from 12:00 pm to 4:00 pm
- Thursday from 12:00 pm to 7:00 pm
- Closed on Sunday, Monday and campus holidays

**Admission
FREE**

Accessibility

- All areas are wheelchair accessible
- There are no special programs for disabled visitors
- No part of the facility requires visitors to read to understand or enjoy
- Handicap bathrooms available
- There is handicap parking. You may also drop off at beginning of lot
- Takes two to three hours to tour all galleries

Directions

Merge onto **101 S.** Take exit **CA – 60 E** toward **Pomona**. Take exit **3B**. For **I-170 S/I-170 N/Long Beach Freeway/Pasadena**. Keep left at the fork to continue toward **N Ford Blvd**. Keep right at the fork. Follow signs for **Cesar Chavez Ave**. Turn right onto **N Ford Blvd**. Take the 2nd left onto **East Cesar E Chavez Ave**. Continue onto **Avenida Cesar Chavez**.

Parking

- Park in Parking Structure #3, located on Avenida Cesar Chavez, entrance at School side Avenue
- \$2 parking permit required to park on floor 6
- Overflow parking in Stadium Lot at corner of Bleakwood and Flora

Additional Info

- Groups of 10 or more visitors, schedule an appointment for guided tours. Tours can be pre-arranged either during public hours or at another time
- Located at the Southeast corner of the campus at Avenida Cesar Chavez and Collegian Avenue in Building S1

Craft and Folk Art Museum

Encouraging curiosity about our diverse world through the universal lens of art.

**5814 Wilshire Blvd.
Los Angeles, CA 90036
(323) 937-4230
cafam.org**

CAFAM champions cultural understanding by encouraging curiosity about our diverse world through the universal lens of art. Our exhibits and programs serve as a catalyst for the exploration of art and ideas that reflect our ever-changing community.

Visiting Information

- Tuesday through Friday from 11:00 am to 5:00 pm
- Saturday and Sunday from 12:00 pm to 6:00 pm
- First Thursday of every month from 6:30 pm to 9:30 pm
- Closed Mondays

Admission

- Adults: \$7.00
- Children: Free 12 and under
- Students and seniors: \$5.00
- **Sundays: pay what you can**

Accessibility

- All areas of the Craft and Folk Museum are wheelchair accessible
- There are no special programs for disabled visitors
- No part of the facility requires visitors to read to understand or enjoy
- Handicap bathroom are available

Directions

Take Interstate **405 South** toward **Santa Monica**, Merge onto **I-10 E/Santa Monica Fwy** toward **Los Angeles**. Take the **Fairfax Ave. exit, Exit 7B**. Turn **Left** onto **S Fairfax Ave**. Go two miles. Turn **Right** onto **Wilshire Blvd**. Museum is 4 ½ blocks up on the **right**, directly across from the Page Museum.

Parking

- Use one of the three large outdoor public parking lots within a block of CAFAM as well as two hour street parking



- The museum is directly across the street from the Page Museum/La Brea Tar Pits which has a parking lot behind their facility
- Enter on **Curson Ave**

Norton Simon Museum

One of the most remarkable private art collections ever assembled

**411 W. Colorado Boulevard
Pasadena, CA 91105-1825
(626) 449-6840
nortonsimon.org**

Over a thirty-year period 20th-century industrialist Norton Simon amassed an astonishing collection of European art from the Renaissance to the 20th century and a stellar collection of South and Southeast Asian art spanning 2,000 years.



Visiting Information

- Wednesday through Monday from 12:00 pm to 5:00 pm
- Friday from 11:00 pm to 8:00 pm
- CLOSED Tuesdays

Admission

- Adults: \$10.00
- Seniors: \$6.00
- **FREE to all the first Friday evening of the month.**

Accessibility

- All areas are wheelchair accessible
- No special programs for disabled visitors
- Some parts of the facility may require visitors to read to understand or enjoy
- Handicap restroom available
- Two hours to go through the whole facility

Directions

Merge onto **101 S**. Slight **left** onto **134 E** (signs for **Burbank/Glendale**). Take **exit 13A** for **Colorado Blvd/Orange Grove Blvd**. Merge onto **W Colorado Blvd**. Destination will be on the **left**.

Parking

- Buses are not permitted to unload passengers or park in the museum parking lot
- Security personnel are available to provide assistance
- Has ample parking for visitors with disabilities
- A wheelchair ramp is provided to the right of the museum entrance stairway
- Bus parking on Colorado Blvd or Walnut Street, as city signs permit

Valley Cultural Center

Bringing together talent, community and business throughout the San Fernando Valley

**21550 Oxnard Street #470
Woodland Hills, CA 91367
(818) 704-1358
valleycultural.org**

Valley Cultural Center serves the greater San Fernando Valley as the prominent resource in promoting the performing and visual arts. With the active support and participation of the community, their mission is to entertain, enrich and educate current and future generations.



Visiting Information

- Open Monday through Thursday from 11:30 am to 10:00 pm
- Friday and Saturday from 11:30 am to 11:00 pm
- Sunday from 12:00 pm to 9:00 pm
- Concerts on the green are seasonal and the schedule and times could be found on the website
- Saturday evening: all movie start times are at dusk. Pre-feature entertainment begins at approximately 7 pm
- Concerts on the Green at Warner Center Park located at 5800 Topanga Canyon Blvd

Admission

FREE, but donations are appreciated

Accessibility

- All the concerts and movies on the green grass are wheelchair accessible
- No special programs provided for disabled visitors
- Handicap bathrooms are available
- No part of the facility requires visitors to read to understand or enjoy

Directions

Head east on **Sherman Way** toward **Kelvin Avenue**. Make a U-turn at **Kelvin Avenue**. Turn **left** onto **Canoga Avenue**. Turn **right** onto **Erwin Street**. Take 1st **left** onto **Owensmouth Avenue**. Turn **left** onto **Oxnard Street**. Destination will be on the **right**.

Parking

- Parking for the Concerts on the Green is available behind the stage on Califa Street for \$10

- Additional parking available on Owensmouth Avenue in either parking structure between Califa and Oxnard. Signs are clearly posted
- Parking for the Movies on the Green is \$5
- For large buses – get there early to drop off clients, should find parking

Armory Center for the Arts

View contemporary art in a beautiful gallery

**145 North Raymond Avenue
Pasadena, California 91103
(626) 792-5101
armoryarts.org**

The Armory Center for the Arts offers changing contemporary art exhibits in a beautiful 3,000 square foot gallery. It is also a community arts center that offers innovative approaches to creating, exploring, and presenting the arts to students of all ages.



Visiting Information

- Tuesday through Sunday from 12:00 pm to 5:00 pm
- Closed Monday
- Prior to your visit, please consult the exhibitions page to insure there is an exhibition in the gallery

Admission

- **FREE** for seniors, students and Armory members, \$5 suggested donation per person for adults
- A guided tour is available for \$5 per person and lasts one hour. Call ahead for reservations

Accessibility

- Handicap restrooms are available

Directions

Take **101 SOUTH** towards **Los Angeles**. Make a slight **left** onto **CA 134** towards Burbank and Glendale. Take **Exit 13B** for **Fair Oaks Ave** toward **Marengo Ave**. Merge onto **Corson Street**. Turn right onto **North Fair Oaks Blvd**. Turn **left** onto **East Walnut St**. Take **first right** onto **North Raymond Avenue**. The Armory Center for the Arts will be on your **right**.

Parking

- The city parking structure just north of the Armory on Raymond Ave, offers free parking for 90 minutes
- Limited free parking is available for Armory patrons at St. Andrew Church, on the northeast corner of Walnut Street and Raymond Ave. You must first obtain a permit from the Armory front office prior to parking in this lot

The Platt and Borstein Galleries at American Jewish University

A thriving center of Jewish resources and talent built upon the mission of Jewish learning, culture, ethics, leadership, and peoplehood

**15600 Mulholland Drive
Los Angeles, CA 90077
1-888-853-6763 or (310) 476-9777
aju.edu**

An independent conservative seminary containing a Judaic library, the Platt Art Gallery and Borstein Gallery, as well as the Sandra & Marvin Smalley Sculpture. Selected Jewish and non-Jewish artists bring insight into current trends as well as historical perspective to our community life.



Visiting Information

Winter hours (September through mid May)

- Sunday through Thursday from 10:00 am to 4:00 pm
- Friday from 10:00 am to 2:00 pm

Summer hours (mid May through August)

- Monday through Thursday from 10:00 am to 7:00 pm

For further information, please contact Shelley Lavender at (310) 476-9777 ext. 201 or slavender@aju.edu.

**Admission
FREE**

Accessibility

- Galleries are handicap accessible
- Handicap restrooms are available
- Able to schedule guided tours

Directions

Located near the intersection of **405 and 101** freeways. From San Fernando Valley (**Tujunga Avenue** near **US-101 North**) **Head East** on **Moorpark Street** toward **Tujunga Avenue** and turn **left** on **Tujunga Avenue**. Merge onto **US-101 North** via the ramp on the left toward **Ventura**. Merge onto **I-405 South** toward **Santa Monica**. Take the **Skirball Center Drive** exit toward **Mulholland Drive**. Turn **left** onto **Skirball Center Drive**. Stay straight to onto **Mulholland Drive**. End at 15600 Mulholland Drive.

Parking

- Handicap spaces will always be marked with either permanent paint markings or a temporary upright handicap sign
- **Free Parking**

Long Beach Museum of Art

Enriching lives and promoting understanding by bringing people together to celebrate the arts

**2300 East Ocean Boulevard
Long Beach, CA 90803
(562) 439-2119
lbma.org**



The Long Beach Museum of Art is located on a magnificent bluff-top site overlooking Long Beach Harbor and the Pacific Ocean. The campus includes the historic Elizabeth Milbank Anderson house and carriage house, now called the Miller Education Center (built in 1912), oceanfront gardens, and a new pavilion with two floors of expansive gallery space for changing exhibitions with the Museum Store in the Masterson Atrium. The historic buildings are home to administrative offices, the Boeing Classroom, and Claire's Café. In addition to changing exhibitions, the Museum offers extensive educational programs for children and adults, musical programs, festivals, and other special events.

Visiting Information

- Thursday from 11:00 am to 8:00 pm
- Friday through Sunday from 11:00 am to 5:00 pm
- Closed Monday and Tuesday

Admission

- Adults: \$7
- Students/Seniors over age 62 (current I.D. required): \$6
- **Free** for museum members and children under 12
- **Thursday evenings from 5:00 pm to 8:00 pm are free**
- **Every Friday is FREE** thanks to generous support from the L.A. County Arts Commission

Accessibility

- The entrance to the museum has a ramp at the main entrance
- The museum is two stories and has an elevator
- Handicap restrooms are available
- Call ahead for possible discount on non free days/hrs

Directions

Take **405 South** to **710 South**. Stay in the left lanes, following the signs for the **Aquarium of the Pacific**. The **710** will end and become **Shoreline Drive**, no stops or turns are necessary. Continue east on **Shoreline Drive**, going past the Aquarium and the Convention Center. At the traffic light at **Ocean Blvd**, turn **right**. Go **East** on **Ocean**

Blvd for approximately 2-3 miles. Once you pass **Junipero**, the Museum Parking Lot will be on your immediate right. The Museum is approximately **100 yards** further **East** on **Ocean Blvd**.

Parking

- **Free** parking is available in the Museum parking lot on Ocean Blvd, one block west of the main entrance
- Metered parking is available on the beach. To park on the beach, turn off of Ocean Blvd at Junipero and follow the road to the parking lot
- There are stairs to the Museum from this area
- Has loading and unloading zone. Call ahead for planning

Pacific Asia Museum

Dedicated to the arts and culture of Asia and the Pacific Islands

**46 North Los Robles Avenue
Pasadena, CA 91101
(626) 449-5269
pacificasiamuseum.org**

Established in 1971, the museum is one of only four U.S. institutions dedicated to the arts and culture of Asia and the Pacific Islands, serving the city of Los Angeles and the Greater Southern California region. The museum's mission is to further intercultural understanding through the arts of Asia and the Pacific Islands



Visiting Information

Wednesday through Sunday from 10:00 am to 6:00 pm

Admission

- General Admission: \$9
- Students and Seniors: \$7
- Free for Children Ages 11 and Under
- **FREE to all visitors on the second Sunday of the month**

Accessibility

- All public spaces of the building and garden are accessible to visitors with mobility impairments and are wheelchair accessible
- Handicap restrooms are available
- There is no food or drink allowed in the museum galleries or courtyard. Picnicking is only permitted for student tours and group tours with advance notice
- There is no flash photography allowed in any of the galleries. Photos without a flash and for personal use are allowed in the permanent collections galleries. There is no photography of any kind allowed in the changing exhibition galleries

Directions

Take **CA-134 East**. Exit **Marengo Avenue/Fair Oaks Avenue**. Merge onto **Corson Street**. Right on **Fair Oaks Avenue**. Left on **Colorado Boulevard**. Left on **Los Robles Avenue**. Right into museum parking lot, the first driveway past the museum

Parking

Free parking is available in the Pacific Asia Museum parking lot on the corner of Los Robles Avenue and Union Street, directly north of the museum.

Huntington Library, Art Collections, and Botanical Gardens

Explore 120 acres of specialized botanical landscaped gardens, most notably the "Japanese Garden", the "Desert Garden", and the "Chinese Garden"

**1151 Oxford Road
San Marino, CA 91108-1218
(626) 405-2100
huntington.org**

The Huntington was founded in 1919 by Henry Huntington. The botanical gardens cover 120 acres and contain more than a dozen specialized gardens, including the Desert, Japanese, Rose, and Chinese gardens. The Children's Garden and the Conservatory provide children and families with exhibits geared toward the fundamentals. The art gallery, originally the Huntington residence, contains one of the most comprehensive collections of 18th- and 19th-century British and French art. The library's collection of rare books and manuscripts in the fields of British and American history and literature is nothing short of extraordinary



Visiting Information

Summer Hours (Memorial Day to Labor Day)

- Wednesday through Monday from 10:30 am to 4:30 pm
- Closed Tuesday

Non-Summer Hours (After Labor Day)

- Monday, Wednesday, Thursday, and Friday from 12:00 pm to 4:30 pm
- Saturday and Sunday from 10:30 am to 4:30 pm
- Closed Tuesdays, Thanksgiving, Christmas Eve, Christmas Day, New Year's Day, and Independence Day

Admission

	Weekdays	Weekends
Adults:	\$15.00	\$20.00
Seniors (age 65+):	\$12.00	\$15.00
Students (Age 12-18) or full time I.D.:	\$10.00	\$10.00
Children (Age 5-11):	\$6.00	\$6.00
Under 5:	Free	Free
Groups of 15 or more	\$11.00	\$14.00

Free Day: Admission is **FREE** to all on the first Thursday of every month with **advance tickets** available on their website. Hours on Free Day are from 10:30 am to 4:30 pm.

Accessibility

- All buildings and most garden areas are accessible to visitors with mobility impairments. Wheelchairs are available for loan at the entrance arcade; please call (626) 405-2125 to reserve in advance
- Handicap restrooms are available
- There are no special programs for disabled visitors
- Reservations are not necessary. Tickets may be purchased at the time of your visit (**except Free day**)
- No part of the facility requires visitors to read to understand or enjoy
- Food and picnicking is not permitted on the grounds, however there is a small area adjacent to the parking lot where you may eat food you have brought before you enter. Dining is available in the café or the tea room
- Pets are not permitted, with the exception of service animals
- Photography, filming, and painting are permitted at The Huntington; restrictions apply
- Please do not bring radios or musical instruments
- Please do not remove plants, flowers, or fruit from the grounds
- The Huntington encompasses 207 acres in the San Gabriel Valley. While The Huntington does not function as a wildlife center, the lush landscape does provide a natural habitat for birds and squirrels. It is not uncommon to see raccoons, possums, and, occasionally, coyotes on the property. **Do not approach or feed any animals.** All wild animals may carry disease. For your safety, please keep a respectful distance

Directions

Take **US 101 S** to **CA 134** and exit at **Colorado Blvd/Orange Grove Blvd**. Merge onto **W Colorado Blvd**. Turn right at **Allen Ave**. Turn **left** at **Orlando Rd**. Turn **right** at **Oxnard Rd**. Destination will be on the **right**.

Parking

- Parking is free and parking reservations are not necessary unless you are a school or tour group arriving by bus
- **Bus Reservations for Groups:** Groups arriving by bus must make reservations in advance by calling (626) 405-2240. Please note that **all buses** and trucks must use a **specified route** for entering The Huntington from the north. Violators may be cited

Latino Art Museum

Instilling a sense of appreciation for Latino art in the minds and hearts of children and adults

**281 S. Thomas St., Suite 105
Pomona, CA 91766
(909) 620-6009
(909) 484-2618
lamoanet**

The Latino Art Museum is a non-profit organization that promotes the works of talented Latin American contemporary artists living in the United States and offers classes to develop appreciation and understanding of the artistic process.



Visiting Information

Open Wednesday through Sat from 3:30 pm to 6:30 pm

Admission

Contact the museum for information on the current exhibitions and admission cost.

Accessibility

- The facility is wheelchair accessible
- Handicap restrooms are available
- There are no special programs for disabled visitors, but they may participate in some of the classes with the help of an aide
- The Latino Art Museum offers classes to children and adults to develop appreciation of art and understanding of the artistic process
- For more information and question use the contact information listed above

Directions

From the **I-210 East**, take **exit 45** to merge onto **CA-57 S toward Santa Ana**. Take **exit 22** to merge onto **I-10 West** toward **San Bernardino**. Take **exit 45B** for **Garey Ave. /Orange Grove Ave.** turn right onto **N Garey Ave.** Go about a mile. Turn right at **W 2nd St/ W Pomona Mall St** and take the first **left** onto **Thomas St.** (one way). Your destination is one block up on the corner of **Thomas and 3rd**, on the **left**.

Parking

- There are a number of diagonal parking spaces lining the street in front of the museum for standard sized vehicles
- There is a parking lot across the street from the museum
- NOTE: Thomas Street next to the museum is a one way street

Los Angeles County Museum of Art

**Serving the public through the collection, conservation, exhibition,
and interpretation of significant works of art**

**5905 Wilshire Blvd.
Los Angeles, CA 90036
(323) 857-600
publicinfo@lacma.org
lacma.org**

As the largest art museum in the western United States, LACMA attracts nearly a million visitors annually. It holds more than 150,000 works spanning the history of art from ancient times to the present. In addition to art exhibits, the museum features film and concert series.



Visiting Information

- Open Monday, Tuesday, and Thursday from 11:00 am to 5:00 pm
- Friday from 11:00 am to 8:00 pm
- Saturday and Sunday from 10:00 am to 7:00 pm
- Closed Wednesday, Thanksgiving, and Christmas

Admission

- Adults: \$15
- Seniors (62+ with ID): \$10
- Students (18+ with ID): \$10
- Children (17 and under): **Free**
- **General admission is FREE on the second Tuesday of every month**
- Los Angeles County Residents may enter **FREE** after 5:00 pm on Monday, Tuesday, Thursday, and Friday with provide proof of residency

Accessibility

- All areas are wheelchair accessible. Wheelchairs are available at no charge. ID is required
- Assisted listening devices are available at no charge. ID is required
- There are no special programs for disabled visitors
- For wheelchair access to the plaza and galleries at the eastern half of the museum's campus, elevators are located immediately inside the entrance at Spaulding Avenue and Wilshire Boulevard
- No part of the facility requires visitors to read to understand or enjoy
- Handicap bathrooms are available
- Parking is available for large buses
- It takes about two hours to tour the whole facility

Directions

From **US-101 S**, take **EXIT 9C** toward **Highland Ave./Hollywood Bowl**. Turn slight **right** onto **Cahuenga Blvd W**. **Cahuenga Blvd. W** becomes **N Highland Ave**. Go 3.5 miles. Turn **right** onto **Wilshire Blvd**. Go 1 mile. Destination will be on your **left**.

Parking

- Park in the Pritzker Parking Garage, on Sixth Street just east of Fairfax Avenue. The charge is \$10 and may be prepaid at all Welcome Centers, with credit cards accepted
- **Vehicles entering the Pritzker Parking Garage after 7 pm park for free**

Additional Information

Guests requiring assistance may be loaded/unloaded curbside along Wilshire Boulevard either in front of the *Urban Light* outdoor sculpture, at the intersection of Ogden Drive and Wilshire Boulevard, or at the entrance at the intersection of Spaulding Avenue and Wilshire Boulevard.

Museum of African American Art

A unique art space exhibiting the work of acclaimed and emerging artists

**Baldwin Hills Crenshaw Plaza
Macy's 3rd Floor
4005 Crenshaw Blvd.
Los Angeles, CA 90008
(323) 294-7071
maaala.org**

The Museum of African American Art was established as a nonprofit museum in 1976 by noted artist and art historian Dr. Samella Lewis and a group of academic, artistic, business, and community leaders. Their goal was to increase public awareness of and support for the artistic expression of African Americans and other African descendant people.



Visiting Information

- Thursday through Sunday from 12:00 pm to 5:00 pm
- Closed Monday through Wednesday

Admission

FREE

Museum tours are available by appointment for groups of 10 or more. To schedule a tour, please call (323) 294-7071.

Accessibility

- All exhibits are wheelchair accessible
- Handicap bathrooms are available
- Some sections of the facility may require visitors to read to understand or enjoy
- Tour should not take more than 45 minutes

Directions

Merge onto **US-101 S**. Take **exit 19A** to merge onto **I-405 S/San Diego Fwy**. Take **exit 53** toward **Los Angeles/I-10 E**. Merge onto **I-10 E**. Take **exit 9** for **Crenshaw Boulevard**. Turn **right** onto **Crenshaw Blvd**. Destination will be on the **right**.

Parking

- Handicap parking is available
- Outside parking for large buses

Museum of Contemporary Art

Home to almost 5,000 artworks created since 1940

250 South Grand Ave.
Los Angeles, CA 90012
(213) 626-6222
Fax: (213) 620-8674
moca.org



The museum's exhibits consist primarily of American and European contemporary art created after 1940. The Grand Avenue location is used to display pieces from MOCA's substantial permanent collection, especially artists who did much of their work between 1940 and 1980. There is also an extensive set of rooms used to display temporary exhibits, usually a major retrospective of an important artist, or works connected by a theme.

Visiting Information

- Monday and Wednesday from 11:00 am to 6:00 pm
- Thursday from 11:00 am to 8:00 pm
- Friday from 11:00 am to 6:00 pm
- Saturday and Sunday from 11:00 am to 5:00 pm
- Closed Tuesday

Admission

- General Admission: \$10
- Students with I.D.: \$5
- Seniors (65+): \$5
- Children under 12: Free
- **FREE Thursday Evenings** from 5:00 pm to 8:00 pm

Accessibility

- All areas of the museum are wheelchair accessible. Wheelchairs can be requested at the information desk and are available on a first-come-first-served basis
- Sign language interpreters can be arranged upon request 10 days advance notice required. For more information, call Visitor Services (213) 621-1741
- There are no special programs for disabled visitors
- No part of the facility requires visitors to read to understand or enjoy
- Handicap bathrooms are available

Directions

The MOCA lies near the intersection of the 110 and 101 freeways. Many streets in this area are one way, so check your map carefully. From the **101 S**, **exit Temple Street**, turning **left** onto **Temple Street**. Turn **right** onto **Grand Avenue**. Turn **right** onto **2nd Street**. Turn **right** into the **Walt Disney** Concert Hall parking garage.

Parking

- Use the Walt Disney Concert Hall garage; enter from Lower Grand Avenue or 2nd Street
- Parking available for large buses in the lot
- \$9 flat rate with MOCA validation (\$20 deposit required upon entry; \$11 refund)
- There is also oversized parking across the street, which is \$12 daily

Hammer Museum

The Hammer Museum explores the capacity of art to enhance the full range of human experience

**10899 Wilshire Blvd.
Los Angeles, CA 90024
(310) 443-7000
hammer.ucla.edu**

The Hammer Museum explores the capacity of art to impact and illuminate our lives. Through its collections, exhibitions and programs, the Hammer examines the depth and diversity of artistic expression through the centuries with a special emphasis on art of our time. At the core of the Hammer's mission is the recognition that artists play a crucial role in all aspects of human experience.



Visiting Information

- Open Tuesday through Friday from 11:00 am to 8:00 pm
- Saturday and Sunday from 11:00 am to 5:00 pm
- Closed Monday

Admission FREE

Accessibility

- The museum is wheelchair accessible
- There are handicap restrooms available
- No part of the facility requires visitors to read to understand or enjoy
- All school groups and nonprofit organizations are admitted **FREE OF CHARGE**
- **Self-guided tour reservations are required for groups of 20 people or more.** Please contact the Education Department at least one week prior to your visit at 310-443-7041
- Free Weekly Tours and Talks are held Thursdays at 6:15pm. No Reservation is required. Tours convene in front of the Hammer Museum Bookstore
- Lunchtime Art Talks Join Hammer Curators every Wednesday at 12:30 pm for insightful, 15-minute talks about works of art on display and from the collections

Directions

The museum is located at the northeast corner of **Westwood** and **Wilshire Boulevards** in Westwood Village or three blocks east of the **405 freeway's Wilshire Boulevard exit**. Take the **US 101 S** to the **405 S** and exit **Wilshire Blvd East**. Merge into the left

lane and at **Westwood Blvd** make a left turn and the Museums parking structure will be on the right hand side.

Parking

- Parking is available under the Museum. Rates are \$3 for the first three hours with Museum stamp and \$1.50 for each additional 15 minutes. There is a \$3 flat rate after 6:00 pm
- Parking for people with disabilities is provided on levels P1 and P3. Drivers may be able to load and unload with a side lift on the rear of the museum were they will not block traffic

Wildlife, Parks and Gardens

Chavez Ravine Arboretum

Fostering an awareness and appreciation of the roles of plants in nature and in human affairs.

Elysian Park is reached from the 5 or 110 freeways. The Chavez Ravine Arboretum is on the west side of Stadium Way near the Grace E. Simon Lodge, Los Angeles, CA 90012 (213) 485-5054



The City of Los Angeles welcomes you to the first and oldest arboretum in Southern California. The Chavez Ravine Arboretum in Elysian Park was founded in 1893 by the Los Angeles Horticultural Society. Planting of rare trees in the Arboretum continued through the 1920s. Most of the Arboretum's original trees are still standing in their regal grandeur. Many of the trees are the oldest and largest of their kind in California and even the United States. Rich in history and displayed for your pleasure and education, these splendid, handsome trees are but an introduction to the more than 100 varieties from around the world that can be grown in our mild Southern California climate. The Chavez Ravine Arboretum was declared a Historic Cultural Monument in 1967. Please help protect and preserve the Arboretum's trees so future generations can continue to enjoy these living legacies.

Visiting Information

Open every day from 5:00 am to 10:00 pm

Admission

Admission to the Park and Arboretum is **FREE**.

Accessibility

- No part of the facility requires visitors to read to understand or enjoy
- No mention of bathrooms

Directions

From the **Golden State Fwy/I-5 take exit 138 for Stadium Way**. Then, take the first **turn right** onto **Elysian Park Dr**. Finally, take the **first left** onto **Chavez Ravine Rd**, and you will arrive at the destination, which will be **on the right**.

Parking

- Parking is first come, first serve
- Unspecified amount of handicap spaces, if any

Gardens of the World

Bringing the beauty of the world to the Conejo valley

**2001 Thousand Oaks Blvd
Thousand Oaks, CA 91362
(805) 557-1135
Fax: (805) 777-1006
gardensoftheworld.info**



The Gardens of the World became a reality when Ed and Lynn Hogan, founders of Pleasant Holidays, decided to build a striking monument to commemorate the various cultures of the world. Their motivation was simple: to give something back to the community where they live and conduct their highly successful business, and the desire to share with others their travel experiences and the beauty they have seen during their travels around the world.

Visiting Information

- Tuesday through Sunday from 9:00 am to 5:00 pm
- Closed Monday, most national holidays, and during inclement weather
- Please call ahead to confirm or reschedule your visit

**Admission
FREE**

Accessibility

- The gardens are wheelchair accessible. The garden area is surrounded by a concrete walkway able to accommodate wheelchairs. Access to some areas requires going up or down a slight incline
- Handicap restrooms are available
- There are no special programs for disabled visitors
- Docent guided tours are available. Tours are conducted Tuesday through Sunday and run approximately 45 minutes in length. Reservations required
- The Gardens may be available for select fundraising events. However, they are not able to accept requests for private events, parties, or ceremonies
- Visitors are welcome to bring a brown bag lunch with recyclable containers and eat in the designated picnic area. Please dispose of trash properly. No glass is allowed

Directions

Take **US-101 N** toward **Ventura**. **Exit at Hampshire Rd**. Keep right at the fork, follow signs for **Thousand Oaks Blvd** and merge onto **Hampshire Road**.

Turn left onto **Thousand Oaks Blvd.** Go nearly a mile. The destination will be on the right. This location can be hard to spot. The entry looks like a driveway to a private residence. The entry is located just west of Mastro's Steakhouse and just east of the MTA bus stop. The name does not appear at this location. Instead, look for the numbers 2001 on the pillar next to the gate.

Parking

- Handicap and limited visitor parking is available behind the Resource Center. The parking lot is VERY SMALL and there are only a couple of handicap spaces. Tight turns and limited space to turn around does not allow for oversized vehicles
- Additional parking is generally available on Thousand Oaks Blvd. However, many areas where it is allowable to park have a strip of grass between the curb and the sidewalk which could make use of wheelchair ramps difficult
- Buses should enter at the front gate and proceed up the driveway to the bus turn around area in front of the Resource Center. There is room for loading and unloading at this spot
- The bus turnout area on the street in front of the gardens is reserved for city buses and cannot be used for loading and unloading

Lake Shrine Temple and Grounds

Visit and explore many peaceful and relaxing gardens

**17190 Sunset Blvd
Pacific Palisades, CA 90272
(310) 454-4114
info@lakeshrinetemple.org
lakeshrine.org**



Enjoy the scenic beauty and serenity of this spiritual sanctuary. The ten-acre site with its gardens and natural spring-fed lake is home to a variety of flora and fauna, including swans, ducks, koi, and trees and flowers from around the world. The grounds include a court of religions honoring the five principal religions of the world, the Mahatma Gandhi world peace memorial where a portion of Gandhi's ashes are enshrined, a museum with exhibits on the life and teachings of Paramahansa Yogananda, and a gift shop with arts and crafts from India.

Visiting Information

Gardens and Lake hours:

- Tuesday through Saturday from 9:00 am to 4:30 pm
- Sunday from 12:00 pm to 4:30 pm
- Closed Monday, holidays, and during inclement weather

Visitor's Center hours:

- Tuesday through Saturday from 9:00 am to 4:30 pm
- Sunday from 12:00 pm to 4:30 pm

Gift Shop and Museum hours:

- Tuesday and Wednesday from 12:00 pm to 4:30 pm
- Thursday through Saturday from 10:00 am to 4:30 pm
- Sunday from 10:00 am to 10:45 am and 12:00 pm to 4:00 pm

Admission

FREE

Accessibility

- Some parts of the Lake Shrine are wheelchair accessible, however many of the paths are unpaved. Some areas are only accessible via a stairway
- There are no special programs for the disabled
- No part of the facility requires visitors to read to understand or enjoy.
- There are handicap restrooms available

- Visitors of all ages and religions are welcome to visit the grounds, however please keep in mind that this is a spiritual garden that encourages meditation. Quiet is appreciated

Directions

The Lake Shrine Temple is located on **Sunset Blvd.**, just inland from Pacific Coast Highway and the beach. There are two entrances to the Lake Shrine. The entrance to the Lake Shrine grounds is $\frac{1}{4}$ mile east of the beach at **17190 Sunset Blvd.** The entrance to the Lake Shrine Temple Building is another $\frac{1}{4}$ mile east at **17080 Sunset Blvd.** Visitors should use the Temple entrance only if they are attending a lecture or other event to be held in the temple.

From Pacific Coast Highway:

Take the **Santa Monica Freeway West** until it ends. Merge with **Pacific Coast Highway**. Drive 4 miles to **Sunset Blvd** and turn right. The entrance to the grounds is $\frac{1}{4}$ mile up on your right. The Temple is another $\frac{1}{4}$ mile up also on your right.

From Sunset Blvd.:

Exit the **405 freeway at Sunset** and head west to the **City of Pacific Palisades**. You will come to the Lake Shrine Temple Building entrance on your left. There are no left turns allowed into the temple building entrance, so you will have to drive to the next light (which is Palisades Drive) turn right and then make a U-turn at the first island. If you are going to the grounds, then continue on just past the stop light at Palisades Drive. The entrance will be on your left-hand side.

Parking

- The grounds parking lot is open during visiting hours
- The Temple parking structure is open only for Temple activities and is accessible 45 minutes before each activity
- Parking is on a first-come first-serve basis
- Overflow parking can be found on the street and surrounding areas
- Please refrain from parking on private property
- For more details, check the website

Sepulveda Basin Wildlife Reserve

Birds of the Valley

6350 Woodley Avenue
Van Nuys, CA 91406-6473
(818) 756-8190
laparks.org/dos/horticulture/sepulvedabasin.htm

Ringed by mountains, rivers and streams, the Sepulveda Basin Wildlife Reserve is a haven of rest for wildlife and humans alike, a welcome oasis within an urban setting. Here, the visitor of today can get a sense of what this part of the San Fernando Valley might have been like before agriculture and urban settlement forever changed the Valley floor



Visiting Information

- Reserve is open from Sunrise until Sunset
- Must get a picnic permit for large groups – call (818) 756-8187
- The Japanese Gardens are not part of the Wildlife reserve

Admission

FREE

Accessibility

- Paths for exploring are not paved and therefore not wheelchair accessible
- No part of the facility requires visitors to read to understand or enjoy
- There are handicap bathrooms available

Directions

Head east on **Sherman Way** toward Kelvin. Take the 3rd right onto **Mason Ave.** Turn left onto **Victory Blvd.** Turn right onto **Woodley Ave.** Turn left at sign for **Japanese Gardens**, parking is at very end of street.

Parking

- Handicap parking is available
- Parking is available for large buses with room for side lifts on buses

Los Angeles County Arboretum and Botanical Gardens

Enjoy a beautiful, 127-acre botanical garden

301 North Baldwin Ave.
Arcadia, CA 91007
(626) 821-3222
arboretum.org



Los Angeles County Arboretum & Botanic Garden cultivates our natural, horticultural, and historic resources for your learning, enjoyment, and inspiration. You are encouraged to explore the paths, discover the unique plants and wildlife, and have fun on your journey through these 127 acres. The park also contains

historic buildings such as the Queen Anne Cottage, the Huge Reid Adobe, the Santa Anita Train Depot, kiys (thatched huts of the local Native American tribe), and a coach barn. Not all of the buildings are open, but you are free to look through the windows.

Visiting Information

- Open daily from 9:00 am to 4:30 pm
- Closed on December 25

Admission

- Children 0-5: Free
- Children 5-12: \$3.00
- Adults: \$8.00
- Students and seniors: \$6.00
- Admission is **FREE on the third Tuesday of each month**, but there is no tram on these days
- Group pricing for 25 or more: Call 626-821-3212 for tour information
- Hours for the library, tram and café are different. Check the website or contact them for further information

Accessibility

- The majority of the grounds are wheelchair accessible. Most include paved walkways or roadways, but some trails are covered in brick or are hard packed dirt
- Contact tour guides for information on special tours. They might be able to accommodate your group
- No part of the facility requires visitors to read to understand or enjoy
- Handicap bathrooms are available
- Five handicap parking spaces are available

- Parking for large buses in tour bus parking lots, loading and unloading near front entrance
- Only one tram is handicap accessible, and with limited seating

Directions

Take **CA-134 E** toward **Burbank/Glendale**, **CA-134 E becomes I-210 E**, Take the **Baldwin Ave exit, Exit 31**, Turn **right** onto **N Baldwin Ave**.

Veterans Memorial Park

Perfect for picnics

**13000 Sayre Street
Sylmar, CA 91342
(818) 833-7550
District Office (626) 798-1173
Park Reservation Information
(800) CO-PARKS**



Veterans Memorial Park is a beautiful 97-acre park comprising rolling hills, grassy picnic areas, a large pavilion, camping areas and a community recreation building. The park occupies the grounds of the original site of Veterans Hospital built in the 1940s but severely damaged in the 1971 Sylmar Earthquake. In 1972, the U.S. government transferred ownership of the property to Los Angeles County and after demolition and rebuilding; Veterans Memorial Park was dedicated in 1979.

Visiting Information

Open daily from 9:00 am to sunset

Admission

FREE

Accessibility

- Most areas are wheelchair accessible
- No part of the facility requires visitors to read to understand or enjoy
- Handicap restrooms are available

Directions

Merge onto **118 E**. Take **Exit 46B** to merge onto **I-210 W** toward **Sacramento**. Take **exit 4** for **Hubbard St**. Turn right onto **Hubbard St**. Turn left onto **Gladstone Ave**. Turn right onto **Sayre St**. Turn left. Turn right. Destination will be on the right.

Parking

- No handicap parking spaces
- Parking is available for large buses, but can get extremely crowded on weekends
- Outdoor parking
- Does not have any handicap parking that allows for a van or small bus with side lift

The Water Conservation Garden

Educating and inspiring through promotion of water conservation and sustainable use of natural resources

**12122 Cuyamaca College Dr W
El Cajon, CA 92019
(619) 660-0614 ext. 10
thegarden.org**

The Water Conservation Garden has nearly five acres of displays that showcase water conservation through a series of beautiful themed gardens, such as a native plant garden and a vegetable garden, as well as how-to displays, including mulch and irrigation exhibits.

Admission is free, and the Garden can be viewed on a self-guided tour, or through one of our programs.



Visiting Information

Open daily from 9:00 am to 4:00 pm

Tour Schedule

- Weekend Tour Schedule: Docent-led tours of the Garden are held every Saturday at 10:30 am
- Specialty Tours: Specialty Tours are offered on select Saturdays at 10:00 am covering a variety of gardening topics. Please visit our calendar of events to view offerings. Specialty tours are offered in addition to the general garden tours held each Saturday at 10:30 am
- Adult Tours: To schedule an adult group tour at any time during open hours, call 619-660-0614
- Tour Fees: Saturday and Sunday drop-in tours are free of charge. We request a fee of \$5 per person for scheduled group tours. Children under 12 are free of charge

Admission

FREE, but donations are encouraged.

Accessibility

- Much of the facility is wheel chair accessible
- Handicap restrooms are available
- Programs are available upon request
- No part of the facility requires visitors to read to understand or enjoy
- Parking is available

Directions

From **Highway 8**, take **2nd Street off-ramp in El Cajon**. At bottom of ramp, **turn left**. After approximately 1 mile, 2nd Street will change into Jamacha Road. Continue on **Jamacha Road** for approximately 3 miles. **Turn right** on **Cuyamaca College Drive West** (just past Fury Lane). Garden entrance is marked, **on your right**, before entering the college grounds.

Catalina Verdugo Adobe

Enjoy the remnants of the historic “Oak of Peace”

**2211 Bonita Drive
Glendale, CA 91208
(818) 548-2184
ci.glendale.ca.us**

Glendale's oldest building was built around 1828. The home is closed but can be viewed from the outside. The Oak of Peace, on its grounds, is said to have been the site where Jesus Pico and other "California" leaders of Mexican California decided to surrender to the American forces of John Fremont on January 11, 1847



Visiting Information

Open daily from 7:00 am to dusk

Admission

FREE

Accessibility

- Most areas of the Park are wheelchair accessible
- There are no special programs for the disabled
- There are handicap restrooms available
- There is a place for the driver to load and unload clients using a side lift
- The park is 1.3 acres in size and is nestled at the base of the Verdugo Hills in a residential neighborhood
- Amenities include a picnic area for large picnics or gatherings
- Because of the historic nature of the facility, barbecues and amplified sound are not permitted

Directions

Take the **US 101 S** to **CA 134 E** and exit a **Pacific Ave.** and make a left. At **Stocker St** make a right and the 1st left turn onto **Dorothy Dr.** Your destination will be on your right.

Parking

Parking is free and in an open lot.

Elysian Park

Los Angeles' oldest and second largest park

**835 Academy Rd.
Los Angeles, CA 90012
(213) 485-5054
laparks.org/dos/parks/facility/elysianpk.htm**



The park is the second largest park in Los Angeles at 600 acres. It is also the city's oldest park, founded in 1886 by the Elysian Park Enabling Ordinance. The park is surrounded by various communities such as the scenic and historic Angelino Heights, architectural gems on Carol Avenue, Chinatown, El Pueblo de Los Angeles/Olvera Street to the east, and the neighborhoods of Echo Park and Silverlake to the west. The scenic grounds and lush green surroundings have been a hot spot for filming and hub to the entertainment industry for decades. This park offers various picnic locations that can be reserved for outdoor activities

Visiting Information

- Monday through Friday from 5:00 am to 9:00 pm
- Saturday through Sunday from 5:00 am to 9:00 pm

Admission

FREE

Accessibility

- This park is unstaffed and unlocked
- Large grassy areas

Directions

From the **US-101 S/CA-134 E**, take **Exit 5B** to merge onto **I-5 S** toward Los Angeles. Take **Exit 138 for Stadium Way**. Take 1st left onto **Elysian Park Dr**. Turn right onto **Park Rd**.

Parking

- Limited street parking is available
- There are handicap drop-off zones.
- Buses might not be able to fit in parking lots
- Dodger Stadium parking is nearby

Exposition Park Rose Garden

A historic 7-acre sunken garden that has been called “one of the city’s best kept secrets”

**3990 South Menlo Avenue
Los Angeles, CA 90037
laparks.org/exporosegarden/rosegarden.htm
(213) 744-7458**

The Rose Garden is operated by the Los Angeles City Department of Recreation and Parks and has been since 1928. The Rose Garden is visited by hundreds of Angelinos and tourists each year. It is often used as an urban oasis by the local Community as a place of quiet and refuge.



Visiting Information

Open daily from 9:00 am to Sunset

Admission

FREE

Accessibility

Pathways are mostly grass, some with sidewalks.

Directions

From **I-405 S**, take **Exit 53** toward **Los Angeles/I-10 E**. Take **Vermont Ave Exit**. Turn right onto **S Vermont Ave**. Turn left onto **Exposition Blvd**.

Parking

- Sloped curve for handicap drop offs
- Limited Street parking is available
- Parking is available in the surrounding area
- Figueroa and 39th St entrance: Pay a fee of \$10 per vehicle and park in Lot 2

Huntington Library and Botanical Gardens

One of the world's great cultural, research, and educational centers

1151 Oxford Road
San Marino, CA 91108
(626) 405-2100
huntington.org

The Huntington has assembled primary materials, art objects, and living collections which reflect the development of Western culture, from the ninth century to the present. These collections embody the diverse and interwoven contributions of many cultures, peoples, and nations. The Huntington's holdings of rare books, manuscripts, art objects, and botanical specimens speak to contemporary audiences.



Visiting Information

Regular hours:

- Monday, Wednesday, Thursday, and Friday from 12:00 pm to 4:30 pm
- Saturday and Sunday from 10:30 am to 4:30 pm
- Closed Tuesday
-

Summer Hours (Memorial Day to Labor Day):

- Wednesday through Monday from 10:30 am to 4:30 pm
- Closed Tuesday

Admission

Admission to The Huntington is **FREE to all visitors on the first Thursday of every month** with **advance tickets**. Hours on Free Day are from 10:30 am to 4:30 pm

Accessibility

- All buildings and most garden areas are accessible to visitors with mobility impairments
- Wheelchairs are available for loan at the entrance arcade
- Mobility impaired visitors are welcome to bring their own motorized scooters, wheelchairs, or Segways
- Handicap restrooms are available
- For visitors who need additional help getting around, The Huntington runs a Special Assistance Vehicle (SAV). This shuttle makes stops approximately every 30 minutes at the following locations: The Library Exhibition Hall, the front of the Rose Hills Foundation Conservatory, the Chinese Garden, south entrance of the Japanese Garden, and the restrooms at the Lily Ponds. Look for the SAV signs

at these locations. Please note the shuttle cannot accommodate strollers, and there is no service in the rain

Directions

Arriving: Exit the **210 at Sierra Madre Blvd.** West on **California Blvd.** South on **Allen Ave** into the Huntington gate.

Exiting: North on **Allen Ave.** East on **California Blvd.** North on **Sierra Madre Blvd.** to the **210 Freeway.** **All trucks and buses on Allen north of California are subject to citation.** Note: Buses must turn off engines while parked at The Huntington

Parking

Parking is free at The Huntington, and no parking reservations are necessary unless you are a school or tour group arriving by bus. **There is only one legal truck/bus route** to The Huntington from the north. Police may ticket you if you do not follow this route.

Calabasas Creek Park

An 1880-period park exhibiting Calabasas Creek

**23501 Calabasas Road
Calabasas, CA 91302
Run by the Leonis Adobe Museum
23537 Calabasas road
Calabasas, CA 91302
(818) 222-6511
Fax: (818) 222-0862
leonisadobemuseum.org/visitor-creekpark.asp**

Calabasas Creek Park reflects a park of a bygone era. The creek runs year round and has been home to Native Americans and early settlers. It is now home to a large family of ducks. The park includes a Victorian rose garden, a few topiary plants, the frontier Calabasas jailhouse, ancient oaks, and Calabasas creek all in a small enclosed area.



Visiting information,

Open Wednesday through Sunday from 10:00 am to 4:00 pm, weather permitting.

Admission

Entrance to the park is **FREE**

Accessibility

- The park is hard packed earth which could be navigated by wheelchairs
- Getting down to the area near the creek where the ducks are involves navigating an inclined pathway that could pose a problem for those in wheelchairs or those with severe mobility issues
- No part of the facility requires visitors to read to understand or enjoy
- The park is quite small and the entire park can be seen by chaperones standing in one or two locations. Additionally, access to the park is through a single gateway which can be easily chaperoned
- Picnic tables are located in several locations throughout the park.
- Park is heavily shaded due to the number of oak and other trees

Directions

From **US-101 N**, take **exit 29** for **Valley Cir Blvd** toward **Mulholland Dr**. Turn **left** at **Valley Cir Blvd** (signs for Calabasas/Mulholland Dr). Take the **1st right** onto **Calabasas Rd**. Destination will be on **the right**.

Parking

- There is a small turnout in front of the park entrance with parallel parking for six cars. These spaces are often full, but if not, they can accommodate an oversized vehicle
- A side lift can be deployed in the space directly in front of the park gate
Otherwise the sidewalk may be too narrow to accommodate a side lift unless the vehicle was pulled out from the curb a bit
- There is additional parking available at the Leonis Adobe at 23537 Calabasas Road, approximately 150 yards west of the park

Deane Dana Friendship Community Regional Park & Nature Center

Green spaces featuring panoramic ocean views, hiking trails, and picnic facilities

**1850 West 9th Street
San Pedro, CA 90732
(310) 519-6115
lacountyparks.org**

This park is a 123 acre natural area park located on the Palos Verdes Peninsula. The park offers dramatic panoramic views of Catalina Island, Los Angeles and Long Beach Harbors, Los Angeles to the north, and the San Bernardino Mountain ranges.



Visiting Information

Park hours:

- Daily from 7:00 am to 6:00 pm
- Closed Christmas Day

Nature Center hours:

- Tuesday through Sunday from 9:00 am to 5:00 pm
- Closed Monday

Admission

FREE

Accessibility

- Parts of the park are wheelchair accessible
- The Nature Center is wheelchair accessible
- There are handicap restrooms available in the Nature Center
- This park offers 2 ADA-accessible buses that take patrons to the popular Vista point trailhead, which is also ADA-accessible
- The park features hiking trails, live animal displays, a group picnic shelter, and educational classes

Directions

Take the **110 S** toward **San Pedro**. **Exit** at **Gaffey St** and make a **left**. Make a **right turn on W 1st St**. At **Western Ave** make a **left turn**. At **9th St** make a **right**. The park will be **on your left**. The Nature Center and many of the trail heads are at the top of Friendship Park Drive. **Turn left** onto **Friendship Park Drive from 9th Street**. The **San**

Pedro Bogdonovich Recreation Center is at the bottom of **Friendship Park Drive** where it meets **Cumbre Drive**.

Parking

Parking is free. There is a small open-air parking lot at the top of Friendship Park Drive, near the Nature Conservancy. If space is available, there is room for oversized vehicles or buses.

Grand Hope Park

Nature and Art in the middle of Downtown Los Angeles

West 9th Street & Hope
Los Angeles, CA 90017
(213) 972-8080
grandparkinfo@musiccenter.org

Grand Hope Park anchors the southern end of the Los Angeles Open Space Network and serves as a gateway to the South Park residential, cultural, and commercial district. One of the earliest beautification projects in the South Park community of Downtown Los Angeles, the 2.5 acre park features a clock tower, decorative fountains, a playground, and neighbors the Museum of Neon Art and the Fashion Institute of Design & Merchandising.



Visiting Information

Open daily from 6:00 am to Sunset.

Admission

FREE

Accessibility

- Blocks One and Two include Grand Avenue Terraces-new pedestrian-friendly steps and ADA-accessible ramps create a series of broad terraces leading down into the park
- Broadway Steps (blocks three and four) occupy the Eastern edge of Block Three and provide an ADA accessible transition between the Community Terrace and Broadway
- Pedestrian entrances to Blocks one and two of the park located at 200 North Grand Street Avenue at 221 North Hill Street

Directions

From **Valley Village**, start out going east on **Sherman Way** toward **Kelvin Avenue**. Turn right onto **Winnetka Avenue**. Turn left to take the **Ventura Freeway East/US-101 East ramp**. Merge onto **US-101 South**. Merge onto **CA-110 South** via **Exit 3B** toward **1-110 Freeway South/San Pedro**. Take **Exit 22** toward **9th street/Convention Center**. Turn slight left onto **West 8th Place**. Stay straight to go onto **James M Wood Blvd**. **James M Wood Blvd** becomes **West 9th Street**. Continue to **West 9th Street & Hope Street**.

Parking

- Parking is available around the park. Some parking meters last for four hours and others for two hours
- Public Parking access: public parking available in Lot 10 on Hill Street between First and Temple Street and Lot 17 near Olive and First Streets Center from Olive Street

Averill Park

A beautifully scenic park for strolling

Averill Park
1300 South Dodson Avenue
San Pedro, CA 90732
(310) 548-7671
laparks.org/dos/parks/facility/averillPk.htm

The park has a gentle waterfall, a meandering stream, and ponds that are home to wild ducks and geese. Dramatic hills with lush greenery and a gazebo set on a hill top offer spectacular views of the city and harbor below. Averill Park is the site for many weddings. It's not unusual to see brides and grooms posing next to the gazebo for photographs. Bring your walking shoes and a picnic lunch, and make an afternoon of it!



Visiting Information

Open from dawn until dusk.

Accessibility

- All areas are wheelchair accessible
- Handicap bathrooms are available
- Call and ask if this park has handicap bathrooms
- Call and ask if the park allows for large bus parking

Directions

Take **US 101 Fwy South**, take **exit 19A for I-405 S/San Diego Fwy**, Merge onto **I-405 S**, take **exit 37A to merge onto I-110 S** toward San Pedro, turn **left onto N Gaffey St**, turn **right onto W 7th St**, Slight left onto **S Dodson Ave**.

La Brea Tar Pits

Explore amazing fossils at La Brea Tar Pits

*This information is for the tar pits and grounds only. **Museum information is located under Page Museum.***

**5801 Wilshire Blvd.
Los Angeles, CA 90036
(323) 934-PAGE (7243)
tarpits.org**

Explore the grounds of the La Brea Tar Pits. See tar bubbling up through the ground, and view life-sized statues of prehistoric animals found in the area. During certain hours you can also view an active fossil excavation.



Visiting Information

- Open daily from 9:30 am to 5:00 pm
- Closed 4th of July, Thanksgiving, Christmas and New Year's Day

Admission

FREE

Accessibility

- All areas are wheelchair accessible
- There are no special programs for disabled visitors
- No part of the facility requires visitors to read to understand or enjoy
- Handicap bathrooms are available in the Tar Pit Area
- Parking is available for large buses

Parking

- The Museum's parking lot is an open lot located at the corner of Curson Ave and 6th St, directly behind the museum (enter from the western side of Curson Ave)
- Monday through Friday: \$1.50 per 20 minutes, up to a maximum of \$9.00 (or \$7.00 with Museum validation)
- Saturday, Sunday, and Holidays: \$7.00 flat rate
- Be sure to bring your parking ticket into the museum to receive your validation
- **Important note about parking:** If you choose street parking over the museum lot, please read all parking signs carefully, as restrictions apply. *Most importantly, DO NOT PARK ALONG WILSHIRE BOULEVARD between the hours of 7-9 am and 4-7 pm (Mon – Fri) or your car will be ticketed and towed. This applies even if you are parked at a meter*
- There is also a Handicap Entrance with a ramp. Once you arrive at the ramp ring the bell and a museum employee will come and assist. This is **ONLY** for going into the Museum

Directions

Follow **101 South** to the **Highland Ave Exit**. Follow **Highland Ave south** to **Wilshire Blvd**. Turn right on **Wilshire Boulevard**. Drive 15 blocks to **Curson Ave**. Turn right on **Curson Ave**. The parking lot will be on the left-hand side at the end of the block.

Other Attractions

Angel's Gate Recreation Center

Home to the Korean Friendship Bell and spectacular views

**3601 S Gaffey Street
San Pedro, CA 90731
Angels Gate Park Recreation Center
(310) 548-7705**



The spectacular panoramic views of the coastline and Santa Catalina Island from the grassy cliffs of this 64-acre park are breathtaking. There is a children's play area, basketball court, soccer field, and recreation center. This massive and intricately-decorated bell and pavilion was donated in 1976 to the people of Los Angeles by the people of the Republic of Korea to celebrate the bicentennial of the U.S. independence, honor veterans of the Korean War, and to consolidate traditional friendship between the two countries.

Visiting Information

- Monday through Friday from 9:00 am to 6:00 pm
- Saturday through Sunday from 10:00 am to 6:00 pm
- Holidays from 10:00 am to 6:00 pm

Admission

FREE

Accessibility

All areas are wheelchair accessible.

Directions

Take the **101 South Fwy** take exit **19A** for **I-405 S/San Diego Fwy**, then **merge onto I-405 South**, take **exit 37A** to **merge onto I-110 S** toward **San Pedro**, take **exit 37A** to **merge onto I-110 S** toward **San Pedro**, turn right onto **Leavenworth Dr**, take the **1st right** onto **Leary Miriam Rd**, turn left and **Angel's Gate Recreation Center** is up ahead.

Addition Information

Ceremonial Ringings occur five time per year:

- July - Independence Day
- August - Korean - Independence Day
- September - Constitution Day
- December – New Year's Eve
- January – Korean American Day

CBS Television City

Watch CBS TV Shows Live

**7800 Beverly Boulevard
Los Angeles, CA 90036
(323) 575-2345
cbstelevisioncity.com**

Considered the nerve center of the CBS Television Network, this 1952 building (later renovated in 1976) is home for many of the top CBS executives, as well as the studio. CBS Television City studio is located next to Farmer's Market and the Grove in Hollywood. One of the shows filmed here is The Price is Right.



Visiting Information

- Box Office open from 7:30am to 5:00 pm
- Pick up free tickets for live tapings of CBS TV shows at the ticket window on the Westside of CBS TV City (facing Fairfax)
- Ticket window is open five days a week, sometimes on the weekend if a show is being taped, 9am-5pm
- Tickets to tapings of all CBS shows are **FREE**

Accessibility

- Shows are handicap accessible
- Handicap parking is available
- The seats are at a first-come first-serve basis, however the first-come goes to the guests that require accessible seating and then to the guests who do not require accessible seating
- Anyone in your party who requires an accommodation to a show should submit a request beforehand

Directions

From **US-101 South** take **exit 9c** toward **Highland Avenue/Hollywood Bowl** Turn slight **right** onto **Cahuenga Blvd West**. Cahuenga Blvd West becomes north **Hollywood Avenue**. Turn **right** onto **Beverly Blvd**. 7800 Beverly Blvd is **on the left**

Parking

- Parking – Free validated parking in lots surrounding studio for those attending a taping or picking up tickets

Index

Academy of Motion Picture Arts and Sciences.....	49	Korean Cultural Center	73
Alhambra Historical Society Museum.....	50	La Brea Tar Pits	126
American Merchant Marine Veterans Memorial.....	9	Lake Shrine Temple and Grounds	106
American Military Museum.....	43	Latino Art Museum.....	94
Angel's Gate Recreation Center	129	Long Beach Museum of Art	89
Annenberg Space for Photography	78	Los Angeles County Arboretum and Botanical Gardens	109
Armory Center for the Arts	86	Los Angeles County Museum of Art.....	95
Averill Park.....	125	Los Angeles Valley College Historical Museum.....	32
Calabasas Creek Park.....	119	Monrovia Historical Museum	37
California African American Museum	41	Museum of African American Art.....	97
California Northridge Art Gallery	76	Museum of Contemporary Art.....	98
California Science Center	40	Norton Simon Museum.....	83
Casa Adobe De San Rafael & Park.....	11	Orcutt Ranch Horticultural Center.....	28
Catalina Verdugo Adobe.....	13, 114	Pacific Asia Museum	91
CBS Television City	130	Page Museum.....	71
Chavez Ravine Arboretum.....	103	Pershing Square	29
Chinatown	16	Rancho Los Alamitos.....	7
City Hall Observation Deck.....	10	Richard J. Riordan Central Library.....	14
County of Los Angeles Fire Museum	45	San Gabriel Mission Church	38
Craft and Folk Art Museum.....	81	Sepulveda Basin Wildlife Reserve.....	108
Deane Dana Friendship Community Regional Park & Nature Center	121	The Ararat-Eskijian Museum.....	53
El Pueblo De Los Angeles	18	The Autry in Griffith Park	57
Elysian Park	115	The Nethercutt Museum	52
Exposition Park Rose Garden	116	The Old Plaza Firehouse.....	48
Farmers Market.....	20	The Platt and Borstein Galleries at American Jewish University.....	87
Fowler Museum at UCLA	63	The Ruth and Charles Gilb Arcadia Historical Museum.....	55
Gardens of the World.....	104	The Water Conservation Garden	112
Getty Center	59	The Wende Museum	65
Getty Villa.....	61	Travel Town Museum.....	34
Grand Hope Park.....	124	USC Fisher Museum.....	75
Greystone Mansion	22	Valley Cultural Center	84
Griffith Observatory.....	67	Veterans Memorial Park	111
Hammer Museum.....	100	Vincent Price Art Museum	79
Hathaway Ranch	24	Wayfarers Chapel.....	5
Hollywood Bowl Museum.....	69	Wells Fargo History Museum.....	36
Hugo Reid Adobe	3	William S. Hart Museum	46
Huntington Library and Botanical Gardens	117	Workman and Temple Family Homestead Museum.....	26
Huntington Library, Art Collections, and Botanical Gardens.....	92	Wrigley Mansion	6

Acknowledgments

Our thanks to the following volunteers who contributed significantly to the research and editing of this book. We appreciate your commitment and attention to detail.

Anna Buesing
Diana Casas
Bryan Cubillos
Ian Donaldson
Kurt Gramm
JoAnn Hyslop
Miriam Margolis
Jonathan Merwitzer
James Moran
Robert Nersisyan
Chris Schaffer
Victoria Slusser
Kenneth Strong
Anahit Takayan
Ryan Tucker



Since 1971, Valley Village has provided care for men and women with intellectual challenges in the San Fernando Valley. It's our mission to protect, foster, develop and advance the rights and interests of people with developmental disabilities.

ValleyVillage.org Facebook.com/ValleyVillageLA (818) 587-9450